

**DELTA**<sup>®</sup>

Truck Storage Solutions

More Strength. More Security. More Convenience.



**DELTA** **PRO**

**DELTA**  
**CHAMPION**

**DELTA**

**JOBSITE**

**KARGO** **MASTER**



## Total Storage Solutions

When it comes to durable, weather-resistant and innovative storage solutions for trucks and job sites, Delta Consolidated Industries and its brands — Delta PRO, Delta CHAMPION, Delta, JOBSITE and KargoMaster — have been leading the way for over 40 years. We utilize cutting-edge technology and state-of-the-art materials to improve the strength, security, appearance and convenience of our products. At Delta Consolidated Industries, we ensure that you get the best storage solutions available.



## **Truck Storage Solutions**

Delta PRO Limited Edition Crossover . . . . .	4
Delta PRO Aluminum Single and Dual Lid Crossovers & Innersides . . . . .	6
Delta PRO Steel Crossovers & Innersides . . . . .	8
Delta PRO Aluminum Chests And Aluminum & Steel Trailer Tongue Boxes . . . . .	10
Delta PRO Aluminum & Steel Topside Boxes . . . . .	12
Delta PRO Aluminum & Steel Underbed Boxes . . . . .	14
Delta CHAMPION Gear-Lock™ Truck Boxes . . . . .	18
Delta CHAMPION Aluminum Chests For Trucks . . . . .	20
Delta Aluminum Crossovers & Innersides . . . . .	24
Delta Value Aluminum Crossovers & Innersides . . . . .	26
Delta Aluminum Portable Utility Chests . . . . .	28
Delta Value Aluminum Chests For Trucks & Trailer Tongue Boxes . . . . .	30
Delta Steel Crossovers & Innersides . . . . .	32
Delta Steel Chests & Wheel Well Boxes . . . . .	34
Delta Structural Foam Crossovers . . . . .	36

## **Liquid Transfer Tanks**

Delta Aluminum Liquid Transfer Tanks . . . . .	38
Delta Steel Liquid Transfer Tanks . . . . .	40

## **On-Site Storage**

JOBSITE Heavy-Duty Chests & Piano Box . . . . .	42
---	----

## **Truck And Van Racks**

KargoMaster PRO III™ & PRO IV™ Adjustable Ladder Racks & Quick Pac™ Racks . . . . .	46
KargoMaster Econo™ Racks & Van Racks . . . . .	48
KargoMaster PRO II™ Industrial-Grade Ladder Racks . . . . .	50
KargoMaster Ladder Rack Accessories . . . . .	52

<b>Fitment Section</b> . . . . .	54
----------------------------------	----

<b>How To Measure Your Truck</b> . . . . .	60
--	----

<b>Warranty Information</b> . . . . .	61
---------------------------------------	----

# DELTA<sup>®</sup> PRO<sup>™</sup>

Delta PRO offers the best and most innovative features in truck storage solutions. Delta PRO Crossovers, Innersides and Chests utilize the Self-Adjusting Gear-Lock<sup>™</sup> Dual Rotary Locking System and Self-Aligning Latch Pins to maintain a tight-fitting lid. No adjustments are needed to keep the lid locked down tight. The Gear-Lock<sup>™</sup> Locking System, heavily-reinforced lids and high-strength body will resist over 1,000 pounds of prying force to break in. Delta PRO Topside and Underbed Boxes have a 3-Point Locking System that locks the heavily-reinforced doors on both sides and the top for superior security. Delta PRO products are covered by a 3-Year Limited Warranty. \*Contact Customer Service for information on Delta's Keyed Alike Product.

DELTA PRO

Gear-Lock™ Dual Rotary Locking System self adjusts and locks the lid down tight for superior strength and security. No adjustments are required to maintain a tight-fitting lid. It will resist over 1,000 pounds of prying force in an attempt to break in.



Self-Aligning Lid Latch Pins automatically center in the Gear-Lock™ System. The latch pins are captured by the rotating dual latch hooks which create a tight seal between the lid and body. The system requires no adjustments to maintain a tight-fitting lid.



3-Layer RSL™ Rigid Structural Lids are featured on the Aluminum Crossovers, Innersides and Chests. RSL™ Lids have a reversed beveled inner liner and a layer of rigid foam insulation. These create the strongest, most rigid lids we have tested. Full weather stripping seals out dust and moisture.



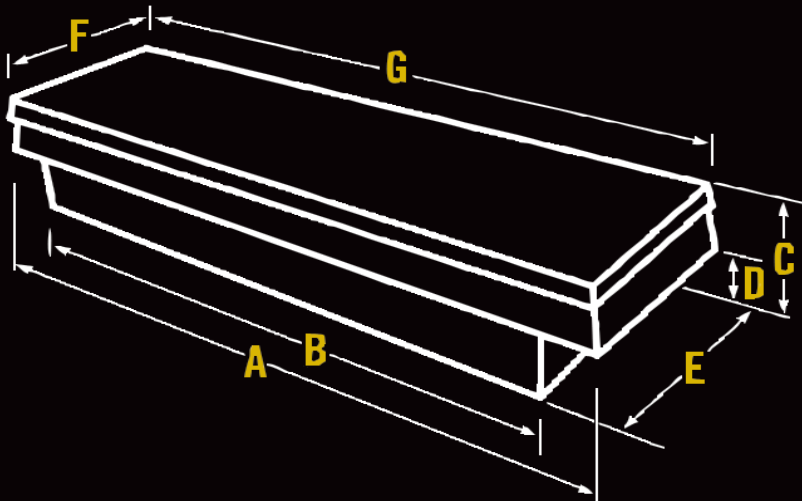
High-Strength Body is reinforced by wide top flanges and welded end dividers to resist cargo damage. Full-length lock console adds strength and protects the locking mechanism. Storage bins are located on both ends for small parts and tools.



Heavy-Duty Guards on single lid models protect the gas spring lid lifts from damage and reinforce the body walls. Guards keep lid lifts from being jammed which commonly prevents the lid from opening. Lids automatically rise when unlatched for easier access to the contents.



# **DELTA PRO** Limited Edition Truck Boxes



<b>DELTA PRO</b>		Dimensions							Usable Cubic Feet	Shipping Cubic Feet	Approx. Shipping Weight Lbs.
Bright Model #	Size	A	B	C	D	E	F	G			
<b>Single Lid Aluminum Crossovers</b>											
1701000	Deep Super Duty & Fullsize Deep	71 1/8"	58 3/4"	18"	12"	20 1/4"	21"	72 1/8"	11.9	17.6	77.0

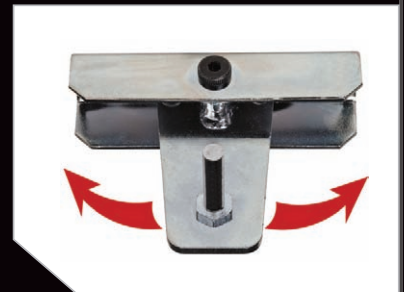


3-Layer RSL™ Rigid Structural Lid has reversed bevel inner liner and layer of rigid foam insulation for the strongest, most rigid lid tested.



The Gear-Lock™ Dual Rotary Locking System is tested to resist over 1,000 lbs of prying and pulling force. It's ratcheting action always engages for maximum security.

### Limited Edition Truck Box Model 17010000

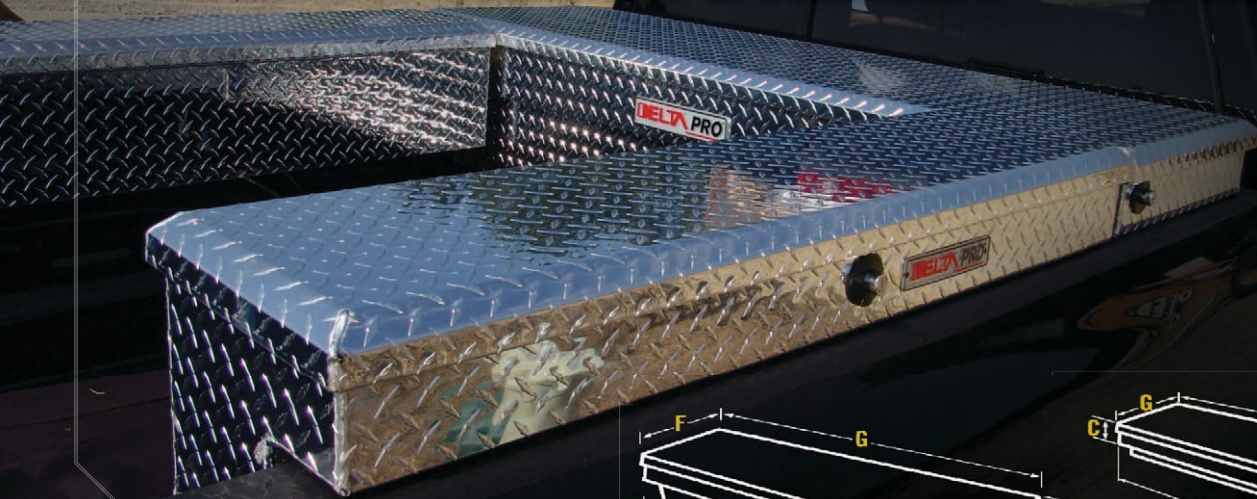


Self-aligning latch pins automatically center in the Gear-Lock™ system and create a tight seal that requires no adjustments to maintain tight-fitting lid.

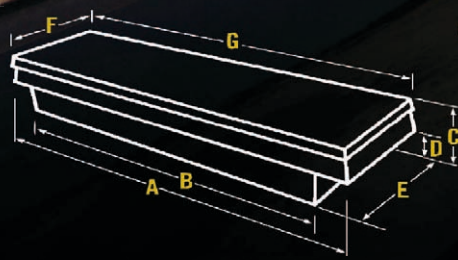
Delta PRO Limited Edition Aluminum Truck Box is the cutting edge in truck box design, providing superior security for tools and equipment. The combination of our Gear-Lock™ Dual Rotary Locking System, RSL™ Rigid Structural Lid and our High-Strength Body will resist over 1,000 pounds of prying force to break in. Our Limited Edition Lid Style showcases a unique rounded lid design style which complements the latest in truck body styling, and enhances the appearance of all truck makes and models.

- Gear-Lock™ Self-Adjusting Dual Rotary Locking System always latches and closes for superior security.
- Self-Aligning Latch Pins pivot from side-to-side to engage with the Gear-Lock™ System. No adjustments required.
- High-Strength RSL™ Laminated 3-Layer Rigid Structural Lid is the strongest, most rigid aluminum lid we've tested.
- Reinforced High-Strength Body and Full-Width Lock Console resists cargo damage and protects the lock system.
- End-Mounted Push Buttons provide easy access. Lid locks and unlocks from either side for security and safety.
- Heavy-Duty Guards protect the vertical-action gas spring lid lifts and help ensure long-term durability.
- Built-in Storage Bin on both ends and 4-Compartment Sliding Tray for convenient hand tool and small item storage.
- Unique rounded lid design compliments the latest in truck body styling and enhances appearance of all truck makes and models.

# DELTA PRO Aluminum Crossovers & Innersides



**3**YR.  
Limited  
Warranty



## DELTA PRO

Bright Model #	Black Model #	Size	Dimensions							Usable Cubic Feet	Shipping Cubic Feet	Approx. Shipping Weight Lbs.
			A	B	C	D	E	F	G			
<b>Low-Profile Single Lid Aluminum Crossovers</b>												
PAC1357000	PAC1357002	Fullsize	70"	60 1/4"	15 1/8"	12 1/8"	17 7/8"	21"	71 1/8"	9.1	14.1	76.5
<b>Single Lid Aluminum Crossovers</b>												
PAC1580000	PAC1580002	Fullsize	70 1/8"	60 1/8"	14 1/4"	9"	20 1/4"	20 7/8"	71"	9.2	14.0	76.5
PAC1582000	PAC1582002	Deep Fullsize	70 1/8"	60 1/8"	17 1/4"	12"	20 1/4"	20 7/8"	71"	11.3	16.2	80.0
PAC1584000	PAC1584002	Ford Super-Duty & Dodge RAM	73 1/8"	63 1/8"	14 1/4"	9"	20 1/4"	20 7/8"	74"	9.7	14.6	80.5
PAC1585000	PAC1585002	Super Deep Fullsize	70 1/8"	60 1/8"	19 7/8"	14 5/8"	20 1/4"	21"	71"	13.0	20.1	83.0
PAC1587000	PAC1587002	Compact	60 1/8"	50 1/8"	11 1/4"	6"	20 1/4"	20 7/8"	61"	6.1	9.1	69.0
PAC1589000	PAC1589002	Mid-Size	62 5/8"	52 5/8"	13 5/8"	8 3/8"	20 1/4"	20 7/8"	63 1/2"	8.0	12.5	73.0
<b>Mid-Lid Dual Lid Aluminum Crossovers</b>												
PAC1596000	—	Fullsize	70 1/8"	60 1/8"	14 1/4"	9"	20 1/4"	20 7/8"	71"	9.2	14.0	62.5
PAC1597000	—	Compact	60 1/8"	50 1/8"	11 1/4"	6"	20 1/4"	20 7/8"	61"	6.1	9.1	55.0
<b>Rear-Hinged Dual Lid Aluminum Crossovers</b>												
PAC1598000	—	Fullsize	70 1/8"	60 1/8"	14 1/4"	9"	20 1/4"	20 7/8"	71"	9.2	14.0	76.5
<b>Aluminum Innersides</b>												
PAN1441000	PAN1441002	48 1/2" Long Lid	47 3/4"	11"	5 3/8"	12 1/8"	7 7/8"	48 1/2"	13"	2.7	5.5	28.5
PAN1442000	PAN1442002	58 1/2" Long Lid	57 3/4"	11"	5 3/8"	12 1/8"	7 7/8"	58 1/2"	13"	3.2	6.6	32.0

Gear-Lock Locking System

Self-Aligning Lid Latch Pins

3-Layer RSL Lid

High-Strength Body Design

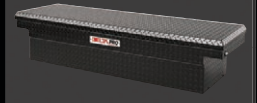
Heavy-Duty Gas Spring Guards





## Aluminum Single Lid Crossovers

Deep Fullsize Model PAC1582000



Diamond Black Powder Coat Finish Available On Most Models



Low-Profile Provides An Improved View Of The Bed And Rear

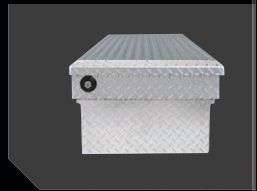
## Aluminum Dual Lid Crossovers



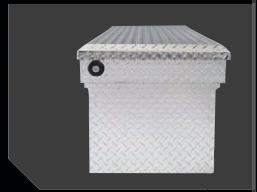
Mid-Lid Fullsize  
Model PAC1596000



Rear-Hinged Fullsize  
Model PAC1598000



Fullsize Model  
PAC1580000



Super Deep Fullsize Model  
PAC1585000

Delta PRO Aluminum Crossovers provide superior security for tools and equipment. The combination of our Gear-Lock™ Dual Rotary Locking System, RSL™ Rigid Structural Lid and our High-Strength Body will resist over 1,000 pounds of prying force to break in.

- Gear-Lock™ Self-Adjusting Dual Rotary Locking System always latches and closes for superior security.
- Self-Aligning Latch Pins pivot from side-to-side to engage with the Gear-Lock™ System. No adjustments required.
- High-Strength RSL™ Laminated 3-Layer Rigid Structural Lid is the strongest, most rigid aluminum lid we've tested.
- Reinforced High-Strength Body and Full-Width Lock Console resists cargo damage and protects the lock system.
- End-Mounted Push Buttons provide easy access. Lid locks and unlocks from either side for security and safety.
- Heavy-Duty Guards protect the vertical-action gas spring lid lifts and help ensure long-term durability.
- Built-in Storage Bin on both ends and 4-Compartment Sliding Tray for convenient hand tool and small item storage.

## Aluminum Innersides

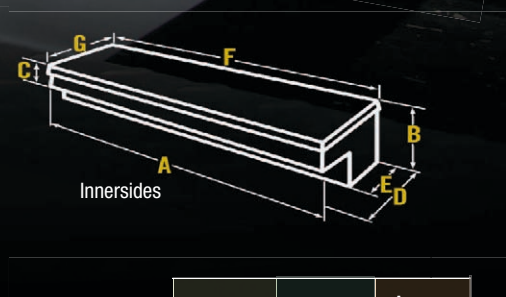
Delta PRO Aluminum Innersides utilize the same Gear-Lock™ System, Self-Centering Latch Pin, RSL™ Lid and High-Strength Body Design as the Crossovers. They mount on the top of the bed side walls and are ideal for storing longer tools and equipment. Innersides help keep the bed free for storing bulky items. Combine Innersides with a Crossover to create a wrap-around storage system.

- Built-In Full-Length Storage Compartment for small tools and parts.
- Mounting Kit includes support legs and hardware.
- All models available with Diamond Black Powder Coat finish.



Model PAN1441000

# DELTA PRO Steel Crossovers & Innersides



## DELTA PRO

### Dimensions

White Model #	Black Model #	Size	A	B	C	D	E	F	G	Usable Cubic Feet	Shipping Cubic Feet	Approx. Shipping Weight Lbs.
<b>Single Lid Steel Crossovers</b>												
PSC1455000	PSC1455002	Fullsize	70 1/8"	60 1/8"	14 1/4"	9"	20 1/4"	20 7/8"	71"	9.2	15.0	94.0
PSC1456000	PSC1456002	Deep Fullsize	70 1/8"	60 1/8"	17 1/4"	12"	20 1/4"	20 7/8"	71"	11.3	17.1	101.0
PSC1457000	PSC1457002	Deep & Extra-Wide Fullsize	70 1/8"	60 1/8"	17 1/4"	12"	29 1/4"	30"	71"	13.5	26.6	175.5
PSC1458000	PSC1458002	Compact	60 1/8"	50 1/8"	11 1/4"	6"	20 1/4"	20 7/8"	61"	6.1	10.6	77.0
<b>Gull Wing Dual Lid Steel Crossovers</b>												
PSC1460000	PSC1460002	Fullsize	70 1/8"	60 1/8"	14 1/4"	9"	20 1/4"	20 7/8"	71"	9.2	15.0	85.0
PSC1461000	PSC1461002	Deep Fullsize	70 1/8"	60 1/8"	17 1/4"	12"	20 1/4"	20 7/8"	71"	11.3	16.3	93.0
<b>Steel Innersides</b>												
PSN1451000	PSN1451002	47 1/2" Long Lid	47 3/4"	11 1/8"	5 3/8"	12 1/4"	8 1/4"	47 1/2"	12"	2.6	4.2	48.5
PSN1452000	PSN1452002	58 1/2" Long Lid	57 3/4"	11 1/8"	5 3/8"	12 1/4"	8 1/4"	58 1/2"	12"	3.2	5.2	60.0

Gear-Lock Locking System

Self-Aligning Lid Latch Pins

High-Strength Body Design

Heavy-Duty Gas Spring Guards



## Steel Single Lid & Dual Lid Crossovers



Single Lid Fullsize Model  
PSC1455000



Gull Wing Dual Fullsize Model  
PSC1460000



Black Powder Coat Finish  
Available On Most Models



Deep Fullsize Model  
PSC1456000



Deep & Extra-Wide Fullsize Model  
PSC1457000

Delta PRO Single Lid and Dual Lid Steel Crossovers provide superior security for tools and equipment. The combination of our Gear-Lock™ System, Reinforced Lids and our High-Strength Body will resist up to 1,000 pounds of prying force to break in..

- Gear-Lock™ Self-Adjusting Dual Rotary Locking System always latches and closes for superior security.
- Self-Aligning Latch Pins pivot from side-to-side to engage with the Gear-Lock™ System. No adjustments required.
- High-Strength, Self-Rising Lids will resist attempted break-ins better than other steel lids.
- High-Strength Body resists cargo damage and protects the lock system.
- End-Mounted Push Buttons provide easy access. Lid locks and unlocks from either side for security and safety.
- Heavy-Duty Guards on Single Lid models protect the vertical-action gas spring lid lifts and help ensure long-term durability.
- Built-in Storage Bin on both ends and 4-Compartment Sliding Tray for convenient small item storage.

## Steel Innersides

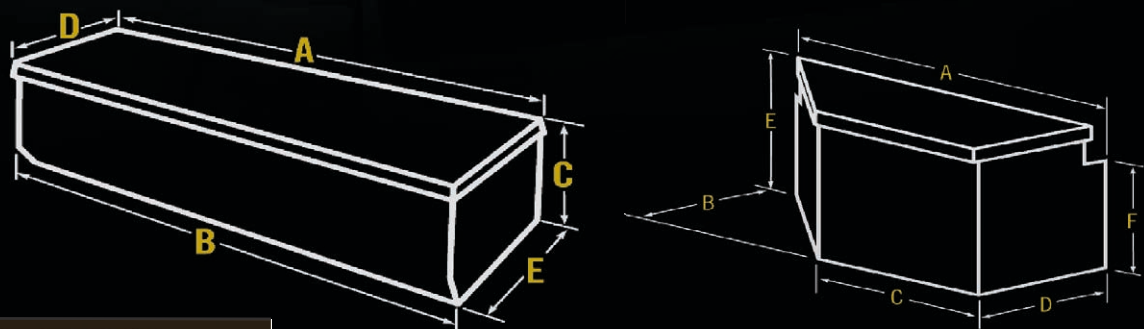


47 1/2" Long Model PSN1451000

Delta PRO Steel Innersides utilize the same Gear-Lock™ System, Self-Centering Latch Pin, Reinforced Lid and High-Strength Body Design as the Crossovers. They mount on the top of the bed side walls and are ideal for storing longer tools and equipment. Innersides help keep the bed free for storing bulky items. Combine Innersides with a Crossover to create a wrap-around storage system.

- Built-In Full-Length Storage Compartment for small tools and parts.
- Mounting Kit includes support legs and hardware.
- All models available with Black Powder Coat finish.

# **DELTA PRO** Aluminum Chests And Aluminum & Steel Trailer Tongue Boxes



<b>DELTA PRO</b>			Dimensions							Usable Cubic Feet	Shipping Cubic Feet	Approx. Shipping Weight Lbs.
Bright Model #	Black Model #	Size	A	B	C	D	E	F	G			
<b>Aluminum Chests</b>												
PAH1420000	PAH1420002	SWB Fullsize	61"	60 1/8"	19 3/8"	20 5/8"	18 3/4"	-	-	12.1	16.4	53.0
PAH1421000	PAH1421002	Compact	46 7/8"	46"	16 1/4"	17 5/8"	14 7/8"	-	-	6.3	10.0	45.5
PAH1424000	PAH1424002	Extra-Wide Fullsize	61"	60 1/8"	19 3/8"	27 5/8"	24 7/8"	-	-	17.0	20.6	68.0
<b>Aluminum Trailer Tongue Boxes</b>												
415000	415002	33" Long	32 7/8"	16"	20"	16 7/16"	16"	16 3/8"	14 1/4"	4.5	8.2	25.5
416000	416002	48" Long	48"	18"	25"	18 7/16"	18"	16 3/8"	16 1/4"	6.1	12.8	33.5
<b>Steel Trailer Tongue Boxes</b>												
White #	Black #											
422000	422002	33" Long	32 7/8"	16"	20"	18 7/16"	16"	16 3/8"	14 1/4"	4.5	8.2	72.0
423000	423002	48" Long	48"	18"	25"	18 7/16"	18"	16 3/8"	16 1/4"	6.1	12.8	97.5

## Aluminum Chests



Fullsize Model PAH142000



Recessed Hinge Allows The Lid To Fully Open When The Chest Is Placed Against The Bed Back Wall.

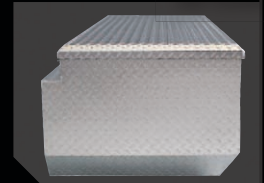
Universal Fit Design Of These Chests Features A Tapered Bottom Section On The Ends And Front Wall To Fit Better In More Models Of Trucks.

Delta PRO Aluminum Chests provide superior security for tools and equipment. The combination of our Gear-Lock™ Dual Rotary Locking System, RSL™ Rigid Structural Lid and our High-Strength Body will resist over 1,000 pounds of prying force to break in.

- Gear-Lock™ Self-Adjusting Dual Rotary Locking System always latches and closes for superior security.
- Self-Aligning Latch Pins pivot from side-to-side to engage with the Gear-Lock™ System. No adjustments required.
- RSL™ Laminated 3-Layer Rigid Structural Lids are the strongest, most rigid lids we've tested.
- High-Strength Body resists cargo damage and protects the lock system.
- Leak-Proof Stainless Steel Paddle Handles prevent moisture from entering the interior.
- All models available with Diamond Black Powder Coat finish.



Fullsize Model PAH1420000



Extra-Wide Fullsize Model PAH1424000

## Aluminum & Steel Trailer Tongue Boxes



Aluminum Model 415000

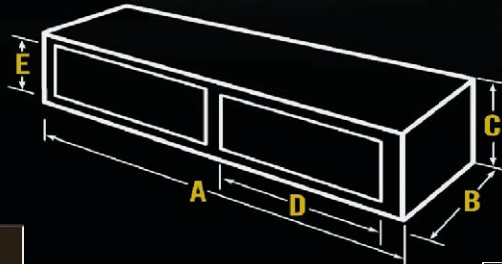


Steel Model 422000

Delta PRO Trailer Tongue Boxes provide superior security and weather-tight storage. Deep Recessed Hinge allows the box to fully open when placed against a rail or trailer wall.

- Rugged Construction and Beveled Edge Lid for greater strength and security. Steel models made of heavy 16-gauge steel.
- Offset Gas Spring Lid Lift allows easier access for loading and unloading from the driver's side.
- Fully-Adjustable Lid Striker helps maintain a tight, moisture-resistant seal between the lid and body.
- Leak-Proof Stainless Steel Paddle Handle prevents back spray from entering. Lock cylinder includes cap to seal out moisture.
- Full Weather Stripping seals out moisture and dust.
- Aluminum models available in Bright Tread or Black Powder Coat finish.
- Steel models have Armor-Brite® White or Black Powder Coat finish.

# DELTA PRO Aluminum & Steel Topside Boxes



<b>DELTA PRO</b>			Dimensions					Usable Cubic Feet	Shipping Cubic Feet	Approx. Shipping Weight Lbs.
Bright Model #	Black Model #	Size	A	B	C	D	E			
<b>Aluminum Topsides</b>										
570000	570002	44" Long	44"	15"	17"	40"	12 3/4"	5.7	7	32
571000	571002	65" Long	65"	15"	17"	28.5"	12 3/4"	8.5	10.3	50
572000	572002	72" Long	72"	15"	17"	40"	12 3/4"	9.4	11.4	55.0
573000	573002	88" Long	88"	15"	17"	40"	12 3/4"	11.5	13.9	58.0
574000	574002	96" Long	96"	15"	17"	40"	12 3/4"	12.5	15.1	63.0
<b>Steel Topsides</b>										
White #	Black #									
575000	575002	44" Long	44"	15"	17"	40"	12 3/4"	5.7	7	72
576000	576002	65" Long	65"	15"	17"	28.5"	12 3/4"	8.5	10.3	107
577000	577002	72" Long	72"	15"	17"	40"	12 3/4"	9.4	11.4	118.0
578000	578002	88" Long	88"	15"	17"	40"	12 3/4"	11.5	13.9	140.0
579000	579002	96" Long	96"	15"	17"	40"	12 3/4"	12.5	15.1	146.0
<b>Optional Steel Storage Shelf For Topsides</b>										
White #	Black #									
9069-2	-	Optional Steel Shelf	36 1/8" L x 7" W						10.0	

## Aluminum Topside Boxes



### Aluminum 72" Long Model 572000

- Aluminum Topside Boxes available with Bright Tread or Diamond Black Powder Coat finish.



Door Reinforcement Channel Covers And Protects The 3-Point Locking System



Rotating Stainless Steel Handles Are Leak-Proof To Prevent Moisture From Entering



Steel Support Legs Are Pre-Drilled For Height Adjustments



Optional Steel Storage Shelf For Aluminum Or Steel Topsides

## Steel Topside Boxes



### Steel 72" Long Model 577000

- Steel Models have Armor-Brite® White or Black Powder Coat finish.

Delta PRO Topside Boxes provide superior security and easy access. Topsides mount on top of the side walls to keep the bed free for bulky cargo. 3-Point Locking System locks each door at the top and sides for greater security. Tall 12" door openings provide easy access to larger items. Heavy-duty construction for long-term durability.

- Reinforced Rain Gutter Doors seal around topside opening to prevent leakage or moisture.
- Heavy-Duty Hinges provide high-strength security, long-term durability and smooth operation.
- Stainless Steel Rotating T-Handle pulls the door tight against the recessed door frames.
- Extra-Strength Center Post and Body Ends resist damage and attempted break-ins.
- Quick release coated aircraft cables allow door to drop down 180° for full accessibility.
- Automotive Bulb Weather Stripping seals door 360°.
- Mounting Kit includes support legs and hardware.

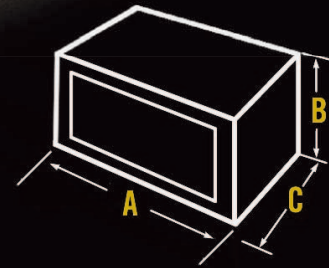
# DELTA PRO™ Aluminum & Steel Underbed Boxes



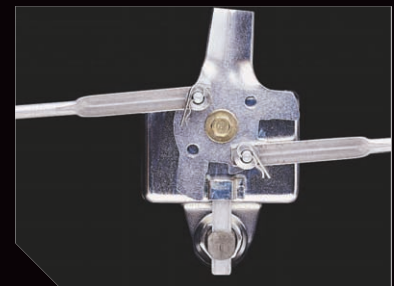
**3**YR.  
Limited  
Warranty

## DELTA PRO

Model #	Finish	Size	Dimensions			Shipping Cubic Feet	Approx. Shipping Weight Lbs.
			A	B	C		
<b>14" Tall x 12" Deep - Steel Underbed Boxes</b>							
1-001002	Black	24" Long	24"	14"	12"	3.0	51.0
1-001000	White	24" Long	24"	14"	12"	3.0	51.0
1-002002	Black	36" Long	36"	14"	12"	4.5	68.0
1-002000	White	36" Long	36"	14"	12"	4.5	68.0
<b>18" Tall x 18" Deep - Steel Underbed Boxes</b>							
1-003002	Black	24" Long	18"	18"	18"	4.1	56.5
1-004002	Black	24" Long	24"	18"	18"	5.4	70.0
1-004000	White	24" Long	24"	18"	18"	5.4	70.0
1-005002	Black	30" Long	30"	18"	18"	6.7	81.0
1-005000	White	30" Long	30"	18"	18"	6.7	81.0
1-006002	Black	36" Long	36"	18"	18"	8.1	91.5
1-006000	White	36" Long	36"	18"	18"	8.1	91.5
1-007002	Black	48" Long	48"	18"	18"	10.7	118.0
1-008002	Black	60" Long	60"	18"	18"	13.4	142.0
1-007000	White	48" Long	48"	18"	18"	10.7	118.0
1-008000	White	60" Long	60"	18"	18"	13.4	142.0
1-009002	Black	72" Long	72"	18"	18"	16.0	168.0
1-009000	White	72" Long	72"	18"	18"	16.0	168.0
<b>24" Tall x 24" Deep - Steel Underbed Boxes</b>							
1-011002	Black	30" Long	30"	24"	24"	11.5	100.0
1-012002	Black	36" Long	36"	24"	24"	13.8	114.0
1-013002	Black	48" Long	48"	24"	24"	18.3	148.0
1-013000	White	48" Long	48"	24"	24"	18.3	148.0
1-014002	Black	60" Long	60"	24"	24"	22.8	176.0



Exclusive new quick release cable design allows door to drop down out of the way for easier loading and unloading of large, heavy or awkward equipment.



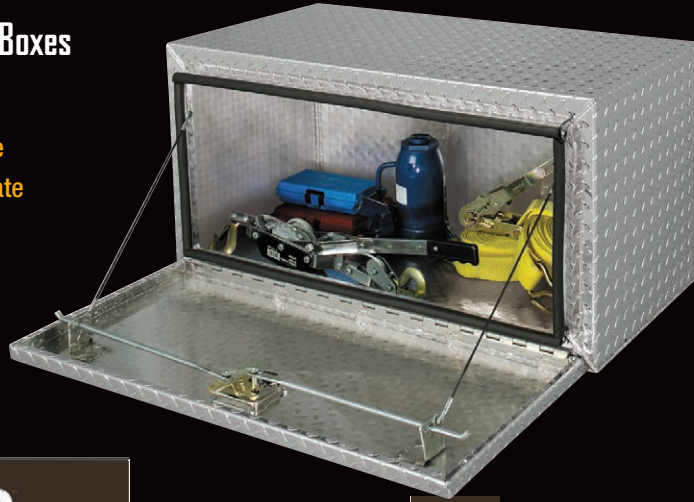
3-Point Locking System Locks The Doors At The Top And Sides To Resist Break-Ins.



# Aluminum & Steel Underbed Boxes

Aluminum 36" Long Model 408000

Aluminum Underbed Boxes are made of high-strength .100-gauge treadplate aluminum.



Aluminum Underbed Boxes Have A Heavy-Duty 3/8" Diameter Continuous Hinge For Maximum Durability. Stainless Steel Rivets Attach The Door To The Body.



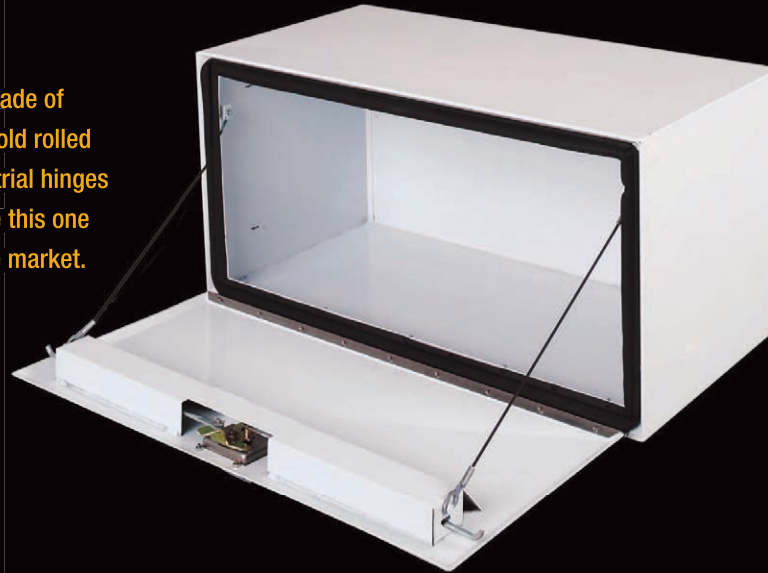
Underbed Box Mounting Brackets  
18" x 18" Model # 228000  
18" x 24" Model # 229000

<b>DELTA PRO</b>			Dimensions			Shipping Cubic Feet	Approx. Shipping Weight Lbs.
Model #	Finish	Size	A	B	C		
<b>Aluminum 18" Tall x 18" Deep Underbed Boxes</b>							
407000	Aluminum	24" Long	24"	18"	18"	5.4	40.0
408000	Aluminum	36" Long	36"	18"	18"	8.0	48.0
409000	Aluminum	48" Long	48"	18"	18"	10.7	61.0

Heavy-Duty 2" C-Channel Brackets For Mounting Underbed Boxes. Bracket Have Multiple Mounting Holes For Easy Installation. Sold In Pairs.

White Steel 36" Long Model 1-006000

Steel Underbed Boxes are made of industrial-grade 14-gauge cold rolled steel. 16-gauge steel industrial hinges and powder coat paint make this one of the toughest boxes on the market.



Rugged 16 gauge steel continuous butterfly hinges offer superior strength

Delta PRO Aluminum and Steel Underbed Boxes are built for protecting heavy tools and equipment in the toughest conditions. Durable weather stripping forms a tight seal to prevent moisture from entering. 3-Point Locking System draws the door tight against the weather stripping surrounding the door opening. It locks the door at the top and on both sides.

- 3-Point Locking System has a rotating T-handle with drill-resistant lock
- "Quick-Release" coated aircraft cables allow door to drop down to vertical position for easy access to equipment in underbed
- New V-Groove door frame, weather stripping and beveled edge door create the tightest, moisture and break-in resistant seal available
- Hinge design allows door to drop down to vertical position when cables are removed
- Lock guard reinforces the door for incredible strength
- Wider, Taller Door Opening for easier, faster access

# DELTA CHAMPION™

Delta CHAMPION Truck Boxes are the standard in rugged, weather-resistant truck boxes. These boxes feature Gear-Lock™ paddle handle latch system with RSL™ Lid Design which has an outer shell, an insulating middle layer and a unique reverse beveled edge lid liner. The combination of these three layers creates the strongest, most rigid aluminum lid in its class. To match the strength of the RSL Lid, Delta CHAMPION features a high-strength body with wider top rails. And, new heavy-duty, adjustable lid strikers hold the RSL Lid down tighter. All Delta CHAMPION products are covered by a One-Year Limited Warranty. \*Contact Customer Service for information on Delta's Keyed Alike Product.



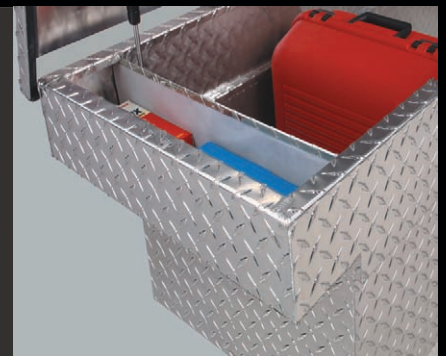
3-Layer Laminated RSL™ Rigid Structural Lids on Aluminum Crossovers, Innersides and Chests have a reverse bevel inner lid liner and rigid foam insulation. It creates the most rigid, strongest lid we've tested. Full Weather Stripping seals out dust and moisture.



Self-Aligning Hoop Lid Strikers lock the lid down tight for superior security. Strikers cannot be bent or pried out of the lock and automatically aligns in locking system. They guarantee a tight seal first time, every time.



High-Strength Body Design resists cargo damage and attempted break-ins. 1" Wide top flanges on the body add extra strength and improve rigidity. And the ends of the body are reinforced with a welded heavy-gauge divider. This creates a convenient storage compartment on both ends.



Leak-Proof Stainless Steel Paddle Handles prevent moisture from entering the interior. Automotive-style lock cylinder comes with double-cut keys for easier locking and unlocking.

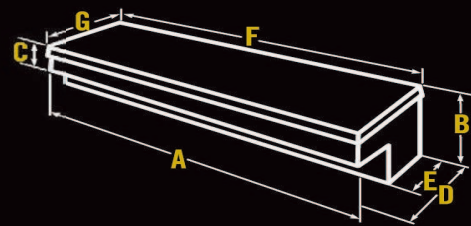
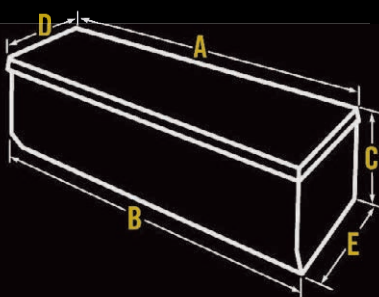
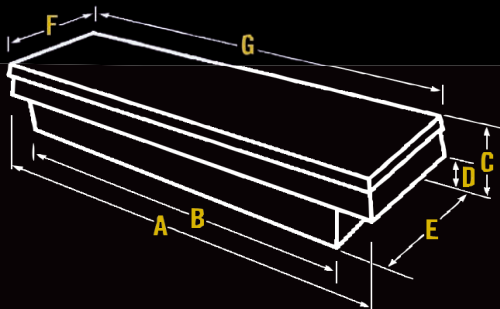


Self-Rising Lids have heavy-duty, reliable gas spring lid lifts. Single and dual lids automatically rise when unlatched providing easier access to the contents.





# Gear-Lock™ Truck Boxes



## Dimensions

Bright Model #    Black Model #    Size    A    B    C    D    E    F    G    Usable Cubic Feet    Shipping Cubic Feet    Approx. Shipping Weight Lbs.

### Delta Champion Gear-Lock™ Crossovers

1-232000	1-232002	Full Size	69"	59"	14 1/4"	9"	20 1/4"	21"	70"	9.2	14	50.5
1-235000	-	Compact	69"	49"	11 1/4"	6"	20 1/4"	21"	60"	7	10	44.5
1-238000	1-238002	Full Size Mid-Lid	69"	59"	14 1/4"	9"	20 1/4"	21"	70"	9.2	14	52.5
1-351000	1-351002	Full Size Low Profile	69"	59"	14 1/4"	12 1/8"	20 1/4"	21"	70"	9	14	56

### Delta Champion Gear-Lock™ Chests

1-350000	1-350002	Full Size Long	61"	61 1/4"	19 1/4"	20 1/2"	20"	-	-	12	16.4	53
----------	----------	----------------	-----	---------	---------	---------	-----	---	---	----	------	----

### Delta Champion Gear-Lock™ Innersides

1-377000	1-377002	58" Long	57 3/4"	11"	5 1/4"	12 1/4"	8"	58 1/2"	13"	3.2	6	28
----------	----------	----------	---------	-----	--------	---------	----	---------	-----	-----	---	----

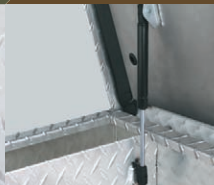
Weather Stripping

Angled Edges (Chests)

Wide Top Flanges

Leak-Proof Handles

Self-Rising Lid



## DELTA Champion Gear-Lock™ Crossovers



The Gear-Lock™ Rotary Locking System is now standard on every Delta Champion Crossover.



Removable Storage Tray s have four compartments for small parts on fullsize crossovers and three compartments on compacts.



## DELTA Champion Gear-Lock™ Chests



Built-in small parts storage bins on both ends of crossover boxes.

## DELTA Champion Gear-Lock™ Innersides



RSL™ Rigid Structural Lids have a reverse bevel inner lid liner and rigid foam insulation.

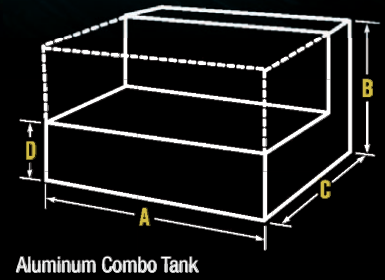
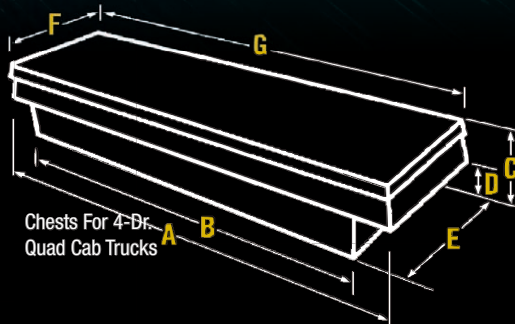
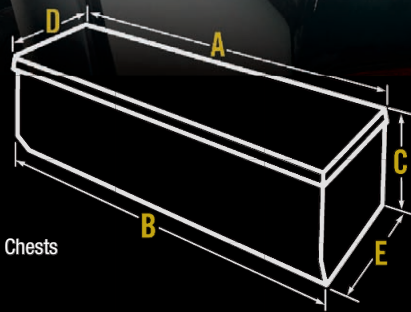
Delta CHAMPION Gear-Lock™ Truck Boxes provide superior security and weather-resistance for tools and equipment. The combination of our RSL™ Rigid Structural Lid, Heavy-Duty Adjustable Lid Strikers and High-Strength Body have created the quality standard for truck boxes in its class.

- RSL Laminated 3-Layer Rigid Structural Lid is the strongest, most rigid lid we've tested.
- Adjustable Lid Strikers lock the lid down tight for superior security.
- Reinforced Body resists cargo damage and protects the lock system.
- Gas Spring Lid Lifts raise the lid when unlatched for easier access.
- Leak-Proof Stainless Steel Paddle Handles prevent moisture from entering.
- Built-In Storage Bin on both ends and 3 or 4 Compartment Sliding Tray for convenient small item storage on crossovers.
- Full Weather Stripping creates a tight, moisture resistant seal.
- Wide Top Flanges provide extra strength and durability.





# Aluminum Chests For Trucks



DELTA CHAMPION			Dimensions							Usable Cubic Feet	Shipping Cubic Feet	Approx. Shipping Weight Lbs.
Bright Model #	Black Model #	Size	A	B	C	D	E	F	G			
<b>Aluminum Chests for 4-Door Quad Cab Trucks</b>												
369000	369002	Full Size	60 1/8"	46 1/2"	19 1/8"	18 1/4"	20 1/4"	20 5/8"	61"	10.3	15.7	48.5
368000	368002	Mid-Size	53 1/2"	39"	15 5/8"	18 1/4"	20 1/4"	20 5/8"	54"	7.0	11.8	42.5
<b>Aluminum Portable Chests</b>												
356000	356002	Chest	37"	36"	14 1/2"	18"	20"	-	-	5.4	7.1	33.0
429000	429002	Tailgate Chest	48 5/8"	47 5/8"	10"	18"	20"	-	-	4.5	6.8	34.0
Model#	Shape	Safety Fill Capacity (Gals.)*	Max. Fill Capacity (Gals.)	Dimensions				Shipping Cubic Feet	Approx. Shipping Weight Lbs.			
<b>Fuel-N-Tool Combo Aluminum Transfer Tank (Removable Chest available separately as Model 429000 above.)</b>												
433000	L-Shaped Tank	72	77	48 1/4"	19"	31"	9"	23.0	129.0			

\* Capacity includes a safety reserve to allow for expansion of the contents in warm weather.

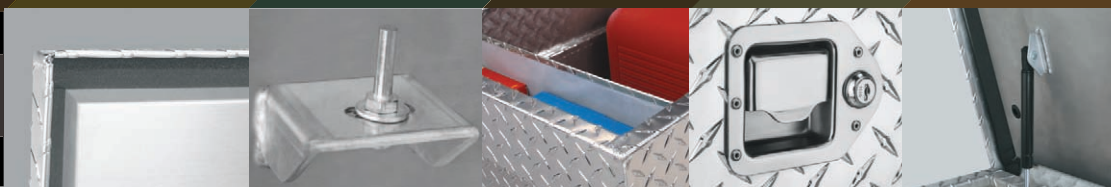
RSL Rigid Structural Lid

Adjustable Lid Strikers

High-Strength Body

Leak-Proof Handles

Self-Rising Lid

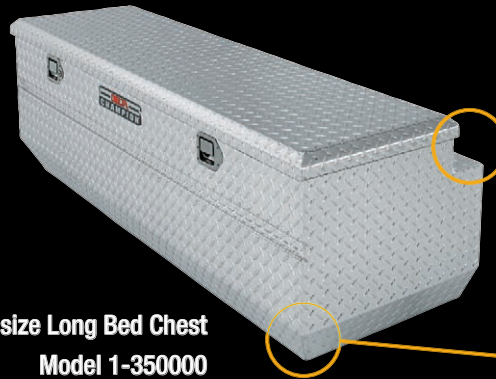


## Aluminum Chests For 4-Door Quad Cab Trucks



Full-Size Model 369000

## Aluminum Chests For 2-Door Standard & Extended Cab Trucks



Fullsize Long Bed Chest  
Model 1-350000

Recessed Hinge Allows The Lid To Fully Open When The Chest Is Placed Against The Bed Back Wall.



Tapered Bottom Sections On The Ends And Front Wall To Fit Better In Trucks With Bedliners.



Oversized Storage Compartment On Both Ends Of 4-Door Chests Has Nearly Double The Space Of Storage Compartments On The Ends Of Crossovers

Our Chests for 2-Door Trucks sit on the bed floor without extending above the bed side walls, and can be used with tonneau covers. Tapered bottom sections on the ends and front wall allow the chest to fit in the best location. Our unique Chests for 4-door trucks provide extra-wide storage space. They sit on the bed floor between the wheel wells and the ends and the chest extends over the wheel wells, providing extra storage space for small items.

- RSL™ Laminated 3-Layer Rigid Structural Lid is the strongest, most rigid lid we've tested.
- Adjustable Lid Strikers lock the lid down tight for superior security.
- Reinforced Body resists cargo damage and protects the lock system.
- Gas Spring Lid Lifts raise the lid when unlatched for easier access.
- Leak-Proof Stainless Steel Paddle Handles prevent moisture from entering.
- Full Weather Stripping creates a tight, moisture resistant seal.
- All models available with Diamond Black Powder Coat finish.

## Aluminum Portable Utility Chests

37" Long Model  
356000



## Fuel-N-Tool Aluminum Combo Liquid Transfer Tank With Removable Portable Chest

Fuel-N-Tool Transfer Tank Model 433000



Delta CHAMPION Portable Chests are ideal for use in truck beds, on trailers, in workshops and in a variety of other locations. The Fuel-N-Tool Model 433000 offers the convenience of a 72-gallon capacity transfer tank and 4.5 cubic feet of secure storage space in one unit. Combo Tank is made of rugged .125 Treadplate Aluminum for long-term durability. All tanks are pressure tested for leaks.

- RSL™ Laminated 3-Layer Rigid Structural Lid is the strongest, most rigid lid we've tested.
  - Adjustable Lid Strikers lock the lid down tight for superior security.
  - Reinforced Body resists cargo damage and protects the lock system.
  - Gas Spring Lid Lifts raise the lid when unlatched for easier access.
  - Leak-Proof Stainless Steel Paddle Handles prevent moisture from entering.
  - Full Weather Stripping creates a tight, moisture resistant seal.
- 72-Gallon L-Shaped Tank**
- Two Full Center Baffles add extra strength and control the flow of the contents.
  - 2" NPT Reinforced Bungs allow mounting a pump on either side of the tank. Filter system is recommended.
  - High-Strength Installation Brackets for securing the tank to the truck bed.

# DELTA

Delta Truck Boxes evolved nearly 45 years ago and quickly became the recognized leader in truck storage solutions. Today, Delta Truck Boxes continue to be known as the standard for quality and value. You can select from Aluminum, Steel and Structural Foam models that meet a wide range of storage requirements. All Delta Truck Boxes are covered by a One-Year Limited Warranty. \*Contact Customer Service for information on Delta's Keyed Alike Product.





## Aluminum Truck Boxes

Our Aluminum Crossovers, Innersides and Portable Aluminum Utility Chests offer many outstanding features at a great value.



## Steel Truck Boxes

Delta Steel Truck Boxes are designed for long-term durability. Built to last, these boxes deliver safe, secure storage for both professional and recreational users.

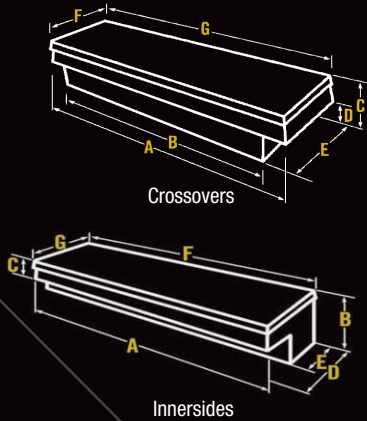


## Structural Foam Crossovers

These Crossovers have a contoured, sculptured design that look great on any truck. The rugged Delta Structural Foam Crossovers are Guaranteed For Life against sagging and defects in material or workmanship.



# DELTA Aluminum Crossovers and Innersides



1 YR.  
Limited  
Warranty

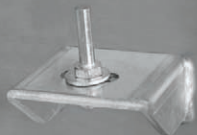
DELTA		Size	Dimensions							Usable Cubic Feet	Shipping Cubic Feet	Approx. Shipping Weight Lbs.
Bright Model #	Black Model #		A	B	C	D	E	F	G			
<b>Low-Profile Single Lid Aluminum Crossovers</b>												
1-302000	1-302002	Fullsize	69 1/8"	59 1/8"	14 1/4"	11 3/4"	17"	20 1/4"	70"	8.8	12.9	37.0
1-309000	1-309002	Ford Super-Duty & Dodge RAM	72 1/8"	62 1/8"	14 1/4"	11 3/4"	17"	20 1/4"	73"	9.3	13.5	41.5
1-310000	1-310002	Mid-Size	62 3/4"	50 1/2"	14 1/4"	11 3/4"	17"	20 1/4"	63 1/2"	7.0	11.7	36.0
<b>Single Lid Aluminum Crossovers</b>												
1-300000	1-300002	Fullsize	69 1/8"	59 1/8"	14 1/4"	9"	17"	20 1/4"	70"	9.3	12.9	36.0
1-301000	1-301002	Deep Fullsize	69 1/8"	59 1/8"	17 1/4"	12"	17"	20 1/4"	70"	11.0	15.6	45.5
1-303000	1-303002	Ford Super-Duty & Dodge RAM	72 1/8"	62 1/8"	14 1/4"	9"	17"	20 1/4"	73"	9.8	13.5	39.5
1-308000	1-308002	Deep Ford Super-Duty & Dodge RAM	72 1/8"	62 1/8"	17 1/4"	12"	17"	20 1/4"	73"	11.6	16.2	43.5
1-304000	1-304002	Mid-Size	62 3/4"	50 1/2"	14 1/4"	9"	17"	20 1/4"	63 1/2"	7.9	11.7	36.0
<b>Slimline Single Lid Aluminum Crossovers</b>												
1-311000	1-311002	Slimline Fullsize	69 1/8"	59 1/8"	16"	10 3/4"	10 3/8"	13 1/2"	70"	6.5	9.9	33.5
<b>Mid-Lid Dual Lid Aluminum Crossovers</b>												
1-306000	1-306002	Fullsize	69 1/8"	59 1/8"	14 1/4"	9"	17"	20 1/4"	70"	9.3	12.9	37.0
1-307000	1-307002	Mid-Size	62 3/4"	50 1/2"	14 1/4"	9"	17"	20 1/4"	63 1/2"	7.9	11.7	36.0
<b>Aluminum Innersides</b>												
1-312000	1-312002	49" Long Lid	47 3/4"	11"	5 3/8"	12 1/4"	8"	48 5/8"	13"	2.7	4.9	24.5
1-313000	1-313002	59" Long Lid	57 3/4"	11"	5 3/8"	12 1/4"	8"	58 5/8"	13"	3.2	5.9	30.0
1-314000	1-314002	72" Long Lid	71 1/8"	11"	5 3/8"	12 1/4"	8"	72"	13"	3.8	6.7	38.0

Rugged Adjustable Strikers

3-Layer RSL™ Lid Bolster

Leak-Proof Paddle Handles

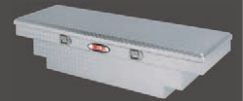
Gas Spring Lid Lifts





## Aluminum Single Lid Crossovers

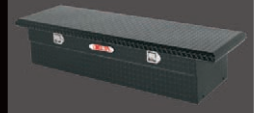
1-300000  
Fullsize Single Lid Crossover



Mid-Size with Double-Notched Sides  
Model 1-304000



Deep Fullsize  
Model 1-301000



Diamond Black Powder Coat  
Finish Available On All Models.



Slimline Fullsize Single Lid  
Model 1-311000

## Aluminum Mid-Lid Crossovers

Single Lid models provide easier access to longer cargo. Lid locks from driver's side and can be opened from either side. Mid-Lid Design offers a 40% larger opening than Gull Wing models. Lids lock, unlock and open from each side.



1-306000  
Fullsize Mid-Lid  
Dual Lid Crossover

- Lid reinforced with new RSL™ Rigid Structural Lid Bolster for superior strength
- Adjustable lid strikers keep the lid locked down tight for improved security
- High-strength body design resists cargo damage and protects the locking mechanism
- Leak-proof stainless steel paddle handles prevent moisture from entering
- Self-rising lids with dual gas spring lid lifts
- All models available in Bright Tread or Diamond Black Powder Coat finish

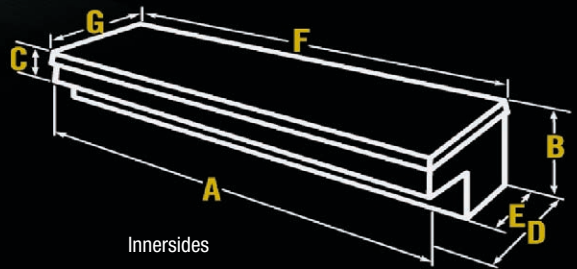
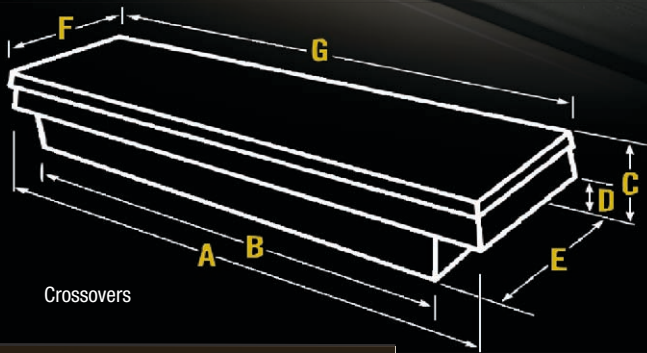
## Innerside Boxes

Mount Innerside Boxes on top of the bed side walls to help keep the bed free for storing bulky items. They are ideal for storing long tools and equipment. Use one or a pair for more storage capacity. Combine two Innersides with a Crossover to create a wrap-around storage system.



49", 59" and 72" Long Models

# **DELTA** VALUE Aluminum Crossovers & Innersides



<b>DELTA</b>			Dimensions							Usable Cubic Feet	Shipping Cubic Feet	Approx. Shipping Weight Lbs.
Bright Model #	Black Model #	Size	A	B	C	D	E	F	G			
<b>Single Lid Aluminum Crossovers</b>												
942000		Fullsize	70 1/8"	61 1/2"	13 5/8"	7 1/8"	20 1/8"	21"	69 3/8"	9.2	13.5	48.5
943000		Compact	60 1/8"	51 1/2"	12 1/2"	6"	20 1/8"	21"	59 3/8"	7.2	10.5	42.5
296000	296002	Fullsize	70 1/8"	61 3/4"	12 3/4"	6 3/4"	16"	16 1/2"	69 1/4"	7.4	9.8	35.5
297000	-	Compact	60 1/8"	51 3/4"	12 3/4"	6 3/4"	16"	16 1/2"	59 1/4"	5.7	8.4	31
<b>Mid-Lid Dual Lid Aluminum Crossovers</b>												
940000		Fullsize	70 1/4"	61 5/8"	13 5/8"	7 1/8"	20 1/4"	21"	69 1/2"	9.2	13.5	45.0
941000		Compact	60 1/4"	51 5/8"	12 1/2"	6"	20 1/4"	21"	59 1/2"	7.2	10.5	40.0
<b>Aluminum Innersides</b>												
864260		48 1/2" Long Lid	47 5/8"	11 1/8"	5 7/8"	11 3/8"	8 1/4"	48 1/2"	11"	2.6	4.2	30.0
865260		64 1/2" Long Lid	63 5/8"	11 1/8"	5 7/8"	11 3/8"	8 1/4"	64 1/2"	11"	3.5	5.7	37.0

## VALUE Single Lid & Mid-Lid Crossovers



Single Lid Fullsize Model 942000



Mid-Lid Dual Lid Fullsize Model 940000

Single Lid models provide easier access to longer cargo. Lid locks from driver's side and can be opened from either side. Mid-Lid Design offers a 40% larger opening than Gull Wing models. Lids lock, unlock and open from each side.

- Beveled Edge Lids are reinforced with a large, pan-style bolster.
- Self-Rising Lids have reliable gas spring lid lifts for easier access.
- Stainless Steel Paddle Handles for long-term durability.
- Full Weather Stripping helps seal out moisture and dust.

## VALUE Aluminum Innersides

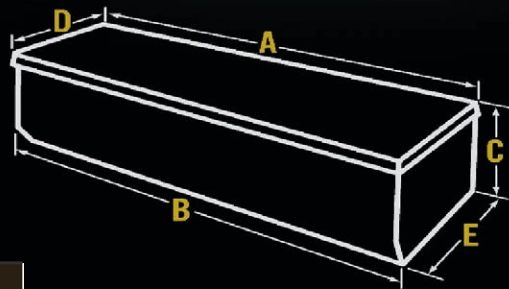


Long Lid Model 864260

Innersides are ideal for storing longer tools and equipment. They mount on top of the bed side walls and keep the bed space free for storing bulky items.

- Beveled Edge Lid is reinforced with a high-strength bolster.
- Self-Rising Lid has a reliable gas spring lid lift for easier access.
- Stainless Steel Paddle Handle for long-term durability.
- Full Weather Stripping helps seal out moisture and dust.
- Includes Mounting Kit with support legs and hardware.

# **DELTA** Aluminum Portable Utility Chests



Bright Model #	Size	Dimensions					Usable Cubic Feet	Shipping Cubic Feet	Approx. Shipping Weight Lbs.
		A	B	C	D	E			
<b>Aluminum Portable Chests</b>									
220000	37" Long	37"	36"	14 1/2"	18"	20"	5.4	7.1	33.0
221000	49" Long	49"	48"	18"	18"	20"	9.9	11.7	43.0
222000	57" Long	57"	56"	18"	18"	20"	11.6	13.5	50.0
808000	36" Portable	36 3/4"	36"	15 1/2"	17 1/4"	17"	5.1	6.4	25.5

Recessed Hinge



Rugged, Adjustable Strikers



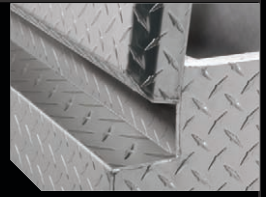
Leak-Proof Paddle Handles



Heavy-Duty Lifting Handles



## Aluminum Portable Utility Chests



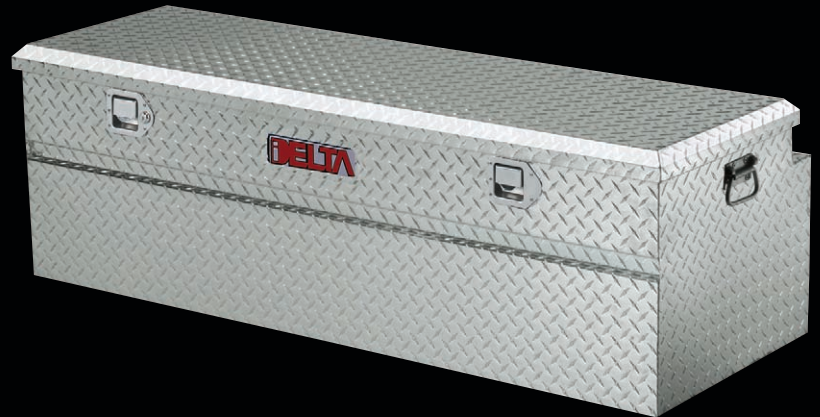
Recessed Hinge Allows The Lid To Fully Open When The Chest Is Placed Against The Bed Back Wall.

37" Long Model 220000



49" Long Model 221000

57" Long Model 222000

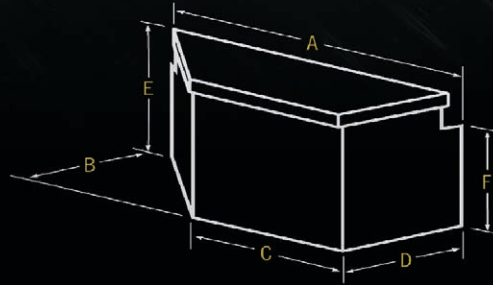
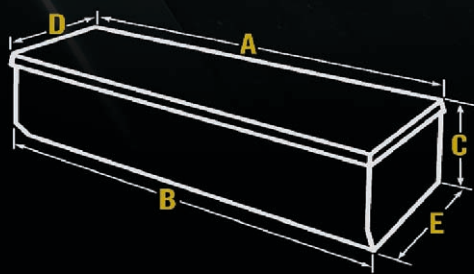


Delta Aluminum Portable Utility Chests offer you a combination of important features for improved performance. All models have a Recessed Hinge allowing the lid to fully open when the chest is against the bed wall. The reinforced lid and adjustable strikers provide superior security. Full Weather Stripping and Leak-Proof Paddle Handles Design protect the contents from moisture.

- Wide Lifting Handles are easy to grip and will support heavy loads.
- Rugged Adjustable Strikers adjust vertically and horizontally to keep the lid locked down tight.
- Large Pan Bolsters reinforce the beveled edge lids for improved rigidity and strength.
- Leak-Proof Stainless Steel Paddle Handles prevent moisture from getting inside.
- Gas Spring Lid Lifts automatically raise the lids for easier access.
- Full Weather Stripping creates a tight seal against moisture and dust.



# VALUE Aluminum Chests For Trucks & Trailer Tongue Boxes



			Dimensions							Usable Cubic Feet	Shipping Cubic Feet	Approx. Shipping Weight Lbs.
			A	B	C	D	E	F	G			
Bright Model #	Black Model #	Size										
<b>VALUE Aluminum Chests For Trucks</b>												
808000	—	36" Portable	36 3/4"	36"	15 1/2"	17 1/4"	17"	-	-	5.1	6.4	25.5
896260	896262	Fullsize	59 1/2"	58 1/2"	17 7/8"	18 3/4"	17 3/4"	-	-	9.8	13.3	47.5
899260	—	Compact	46 1/2"	46"	16 1/2"	18 3/4"	17 3/4"	-	-	7.0	10.0	44.0
<b>Aluminum Trailer Tongue Boxes</b>												
405000	405002	33" Long	33"	16"	20"	17 1/2"	20 1/2"	16 3/8"	14 1/2"	4.5	8.9	24.5
410000	—	48" Long	48"	18"	25"	21 1/2"	20 1/2"	16 3/8"	16 1/2"	7.1	13.7	33.5



## VALUE Aluminum Chests For Trucks



Fullsize Model 896260



The Recessed Hinge Allows The Lid To Fully Open When Chest Is Against The Back Wall Of The Bed.



Tapered Lower Front Wall Will Fit Better In Trucks With All Types Of Bedliners.

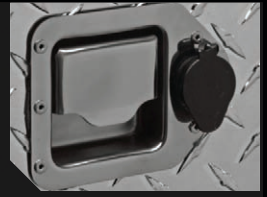
Delta Aluminum Chests provide great features at an exceptional value. All models have a Recessed Hinge, Heavily-Reinforced Lids and Full weather stripping.

- Recessed Hinge allows the lid to fully open when the back of the chest is placed against another object.
- High-Strength Square Edge Lid is reinforced with two pan-style bolsters for extra strength and rigidity.
- Gas Spring Lid Lifts raise the lid when it is unlatched for easier access.
- Leak-Proof Stainless Steel Paddle Handles prevent water from entering through the handle.
- Full Weather Stripping creates a tight, moisture-resistant seal.
- All models available in Bright Tread or Diamond Black Powder Coat finish

## VALUE Trailer Tongue Boxes



Long Model 405000

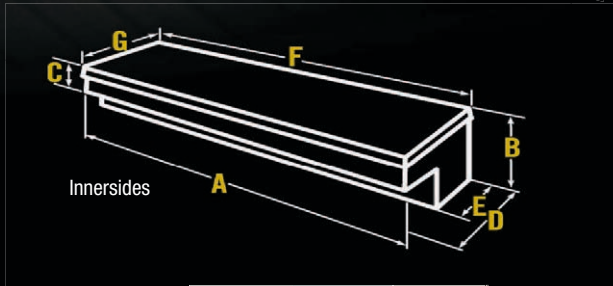
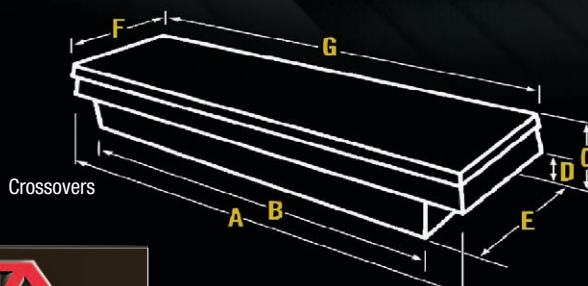


Removable Cap Snaps Over Lock Cylinder To Keep Moisture And Debris From Entering. Leak-Proof Stainless Paddle Handle Prevents Moisture And Back Spray From Getting Inside.

Delta Aluminum Trailer Tongue Boxes provide superior security and weather-tight storage for tools and accessories. Deep recessed hinge allows the box to fully open when it is mounted against a rail or trailer wall. 33" Long Model available with Diamond Black finish.

- Rugged Aluminum construction with reinforced lid for maximum strength and security.
- Offset Gas Spring Lid Lift allows easier access from driver's side.
- Reinforced Lid has a large pan-style bolster for improved strength and rigidity.
- Leak-Proof Stainless Steel Paddle Handle prevents back spray from entering.
- Full Weather Stripping seals out moisture and dust.
- All models available in Bright Tread or Diamond Black Powder Coat finish

# DELTA Steel Crossovers & Innersides



DELTA		Dimensions							Usable Cubic Feet	Shipping Cubic Feet	Approx. Shipping Weight Lbs.
Model #	Size	A	B	C	D	E	F	G			
<b>Steel Gull Wing Dual Lid Crossovers</b>											
901000	Fullsize	70"	60"	14 3/8"	9"	20"	20 5/8"	70 5/8"	9.0	15.0	81.0
902000	Compact	60"	50"	11 3/8"	6"	20"	20 5/8"	60 5/8"	5.8	10.6	66.0
<b>Steel Single Lid Crossovers</b>											
904000	Fullsize	70"	60"	14 3/8"	9"	20"	20 5/8"	70 5/8"	9.0	15.0	86.5
905000	Compact	60"	50"	11 3/8"	6"	20"	20 5/8"	60 5/8"	5.8	10.6	72.5
906000	Mid-Size	62"	52"	14 3/8"	9"	20"	20 5/8"	62 5/8"	7.8	13.5	79.0
922000	Deep Fullsize	70"	60"	17 3/8"	12"	20"	20 5/8"	70 5/8"	11.1	17.1	96.5
<b>Steel Innersides</b>											
820000	48 1/2" Long Lid	48"	11 1/4"	5 1/2"	11 1/4"	8 1/4"	48 1/2"	11 3/4"	2.7	4.4	46.0
821000	64 1/2" Long Lid	64"	11 1/4"	5 1/2"	11 1/4"	8 1/4"	64 1/2"	11 3/4"	3.5	5.7	58.0
<b>Optional Sliding Tray For Delta Steel Innersides</b>											
10099	21"L x 3"D x 8"W										

## Steel Single Lid & Gull Wing Crossovers



Gull Wing Fullsize Model 901000



Single Lid Fullsize Model 904000



Deep Fullsize Model 922000



3-Compartment Tray For Small Parts Storage.

All Delta Steel Crossovers include a 3-Compartment Sliding Tray for convenient storage of hand tools and small parts. Full Weather Stripping helps seal out moisture and dust. Tough Armor-Brite® powder paint finish has superior rust resistance.

Gull Wing Dual Lid Crossovers offer the convenience of unlocking, opening and locking one of the lids while the other remains closed.

- Center Top Section is fully welded to the body for extra strength and longer-term durability.
- Torsion Bar Lid Lifts raise the lids when unlatched for easier access.
- Wide, Full-Length Bolsters add strength and rigidity to the lid.

Steel Single Lid Crossovers have a full-length lid for easier storing of longer tools and equipment.

- Wide, Full-Length Bolsters add strength and rigidity to the lid.
- Fully Welded Upper Body Seams and Formed Channels in the bottom add strength and rigidity to the body.
- Self-Rising Lid has center-mounted heavy-duty gas spring lid lift.

## Steel Innersides



Model 821000



Optional Sliding Tray Model 10099

Use Delta Steel Innersides with a Delta Steel Crossover to create a wrap-around storage system. The Innersides are ideal for storing longer tools and equipment. They mount on top of the side walls keeping the bed free for storing bulky cargo. Mounting Kit with support legs and hardware is included.

- Built-In Storage Compartments on the front for storing hand tools and small parts.
- Fully Welded Seams and Formed Edges add extra strength and rigidity.

# DELTA Steel Chests & Wheel Well Boxes

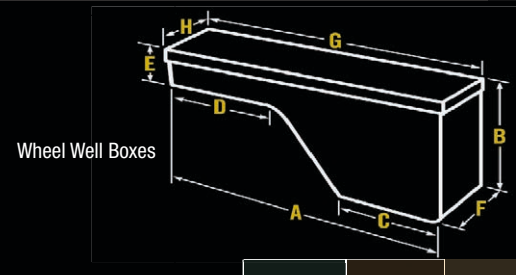
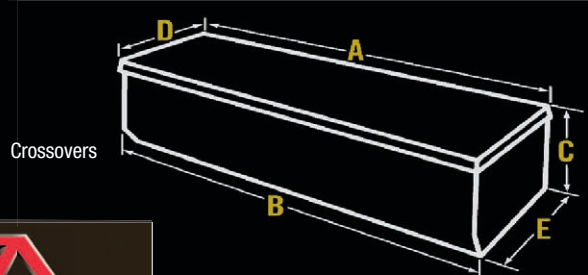


Fullsize Model 807000

## Steel Chests For Trucks

Delta Steel Chests are made of 16-gauge steel and have reinforced lids for improved strength and security. Tough Armor-Brite® Bright White Powder Paint finish has superior rust resistance.

- Self-Rising, Reinforced Lid has dual gas spring lid lifts for easier access.
- Tapered Lower Front Wall will fit better in trucks with all types of bed liners.
- 3-Compartment Sliding Tray provides convenient storage for hand tools and small parts.
- Bottom Bolsters raise the chest above standing water.
- Full Weather Stripping helps seal out moisture and dust.



DELTA		Dimensions								Usable Cubic Feet	Shipping Cubic Feet	Approx. Shipping Weight Lbs.
Model #	Size	A	B	C	D	E	F	G	H			
<b>Steel Chests for Trucks</b>												
807000	Fullsize	59 1/8"	58 1/2"	19"	20 5/8"	17 3/4"	-	-	-	10.2	15.7	129.0
819000	Compact	46 5/8"	46"	16 3/4"	20 5/8"	17 3/4"	-	-	-	7.1	11.4	
<b>Steel Portable Utility Chests</b>												
810000	Lock-Down Hopper Chest With Mounting Brackets	32 5/8"	32"	12 3/4"	11 1/4"	10 3/4"	-	-	-	2.2	3.1	31.5
814000	32 5/8" Long	32 5/8"	32 1/8"	13"	14 3/4"	14 3/8"	-	-	-	3.4	4.2	37.0
815000	48 1/2" Long	48 1/2"	48 1/8"	18 3/4"	21 3/4"	21 1/8"	-	-	-	10.5	12.6	80.0
<b>Steel Wheel Well Boxes</b>												
850000	48" Wheel Well	48"	21 3/4"	16 5/8"	21 3/4"	10"	8"	48 1/2"	8 3/8"	3.1	6.3	44.0
851000	60" Wheel Well	60"	21 3/4"	26 5/8"	21 3/4"	10"	8"	60 1/2"	8 3/8"	3.5	7.6	54.5

## Steel Portable Utility Chests



Lock-Down 32" Hopper Chest Model  
810000  
Includes Mounting Brackets

32" Model 814000

48" Model 815000

Delta Lock-Down Hopper Chest includes two mounting brackets. An internal mechanism locks the chest on the brackets. Release the mechanism to move it. Mounting brackets are reusable. Turn the locking mechanism to release the Chest from the mounting brackets to move or relocate it. Model 814000 and 815000 Delta Steel Chests will also fit in most truck beds. They have reinforced lids and cam-style locks for improved security. Locking arms to hold the lid open for easier access.

- 18-gauge Steel Construction with fully welded seams and formed edges.
- Reliable Push Button Latch Releases on Models 814000 and 815000.
- Sliding Tray provides convenient storage for small items.
- Full Weather Stripping helps seal out moisture and dust.
- Tough Armor-Brite® White Powder Paint finish has superior rust resistance.

## Steel Wheel Well Boxes

Delta Steel Wheel Well Boxes mount in the unused space around the rear wheel wells. They provide easy-to-reach, lockable storage space. The reversible lid is easy to change for using a Wheel Well Box on either side of the bed. Key-operated cam-style lock locks the lid tight.

- Rugged Steel Construction with fully welded seams and formed edges.
- Built-in Divider for storing small tools or parts.
- Full Weather Stripping helps seal out moisture and dust.
- Tough Armor-Brite® White Powder Paint finish has superior rust resistance.



Model 850000

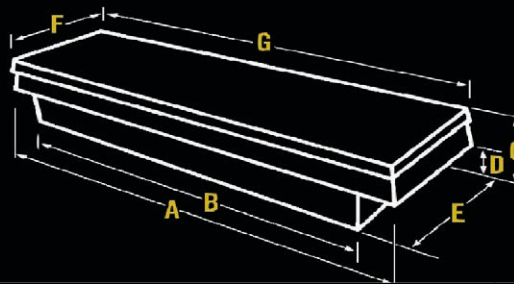


## Structural Foam Crossovers



Delta Structural Foam Crossovers have a contoured and sculptured design that looks great on any truck. The tough, durable material has reinforcing ribs and will not sag in the coldest or hottest environments.

- Lids are heavily reinforced and overlap the high-strength body for superior security and prevent moisture from entering.
- Self-Rising Lids utilize torsion bar lid lifts for more convenient access.
- High-strength Nylon Latches hold the lids down tight to resist forced entry and to seal out moisture and dust.
- Automotive-Style Lock Cylinder with double-cut key for more convenient access.
- Interior Reinforcing Ribs can be used to hold dividers which prevent the cargo from shifting.



### Dimensions

Model #	Size	A	B	C	D	E	F	Usable Cubic Feet	Shipping Cubic Feet	Approx. Shipping Weight Lbs.
<b>Structural Foam Crossovers</b>										
203000	Fullsize	70"	58"	15 1/8"	9"	15 3/8"	20 5/8"	8.0	12.7	57.5
204000	Compact	60"	48"	15 1/8"	9"	15 3/8"	20 5/8"	6.0	10.8	50.5



## Liquid Transfer Tanks

Delta Liquid Transfer Tanks provide temporary storage and transportation of non-flammable fuels or other liquids. These are ideal for job sites or agricultural use. Made to withstand heavy use, Delta Tanks are made of .125 aluminum or 14-gauge steel. They are equipped with baffles for additional strength and to control the flow of the contents during transportation. All tanks are pressure tested for leaks.

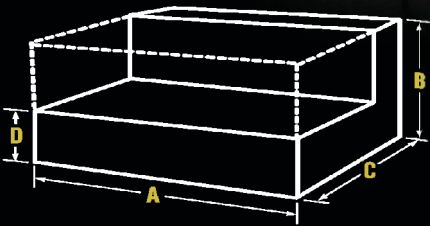
Caution: These tanks CANNOT be connected to an existing fuel system under any circumstances. Tanks meet Specific Requirements Pertaining to CAN/CSA B-621-98 Regulations. They are not designed for flammable liquids such as gasoline. Usage of tanks is regulated by State and sometimes local ordinances. Contact your local Fire Department for details. Contact your local Fire Chief or Fire Marshal to determine your local restrictions.



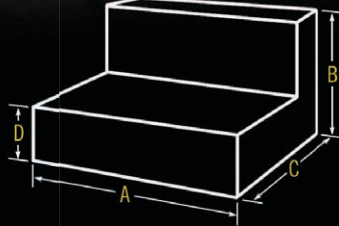
# DELTA Aluminum Liquid Transfer Tanks



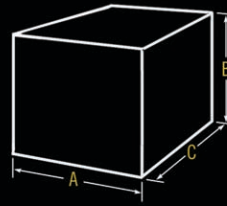
Combo Tank



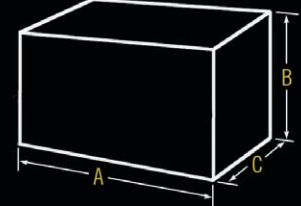
L-Shaped Tank



Square Tank



Rectangular Tank



- All Transfer Tanks Feature a 2" Bung Fill Tube which protrudes into the tank to help limit the capacity and allow space in the tank for expansion of the contents due to warm weather.
- The Safety Capacity is the MINIMUM capacity of the tank when filled to the bottom of the Bung Fill tube....not the maximum capacity of the tank.
- The Maximum Gallon Capacity is also shown in the chart.

DELTA				Dimensions				Shipping Cubic Feet	Approx. Shipping Weight Lbs.
Model #	Shape	Safety Fill Capacity (Gals.)*	Maximum Fill Capacity (Gals.)	A	B	C	D		
<b>Fuel-N-Tool Combo Aluminum Transfer Tank</b>									
433000	L-Shaped Tank	72	77	48 1/4"	19"	31"	9"	23.0	129.0
	Removable Chest**	-		48 5/8"	10"	20"	-	-	-
<b>Aluminum Liquid Transfer Tanks</b>									
437000	L-Shaped	99	104	57 1/2"	25"	31"	9"	29.6	112.0
438000	Rectangular	91	102	45 1/4"	23 1/4"	26 1/4"	-	17.1	94.0
439000	Square	47	52	23 1/4"	23 1/4"	26 1/4"	-	8.9	64.0

\* Capacity includes a safety reserve to allow for expansion of the contents in warm weather.

\*\* Removable Chest available separately as Model 429000, shown on pages 24–25.



## Fuel-N-Tool Aluminum Combo Liquid Transfer Tank With Removable Portable Chest

72-Gallon Capacity Model 433000



The Fuel-N-Tool Model 433000 offers the convenience of a 72-gallon capacity transfer tank and 4.5 cubic feet of secure storage space in one unit. Combo Tank is made of rugged .125 Treadplate Aluminum for long-term durability. All tanks are pressure tested for leaks. See Caution Statement on page 41.

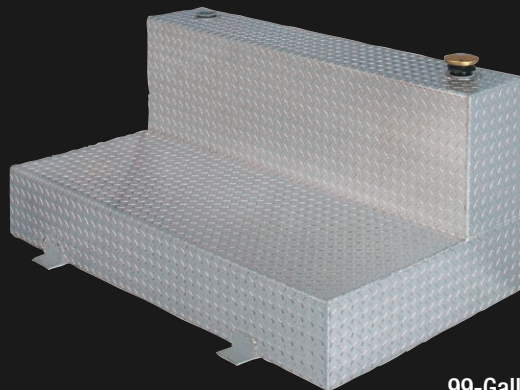
### 72-Gallon L-Shaped Tank

- Two Full Center Baffles add extra strength and control the flow of the contents when moving.
- 2" NPT Reinforced Bungs allow mounting a pump on either side of the tank. Filter system is recommended.
- Four High-Strength Brackets for securing the tank to the bed. All brackets must be bolted to the truck bed.

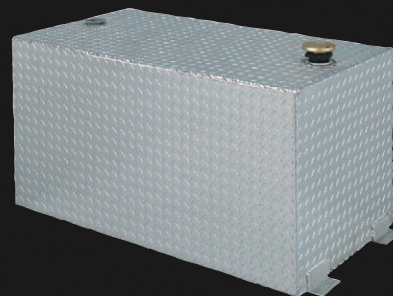
### Removable, Portable Chest

- Chest provides 4.5 cubic feet of high-strength storage for tools and accessories.
- RSL Rigid Structural Lid, Heavy-Duty Adjustable Lid Strikers and High-Strength Body resist break-ins.
- Self-Rising Lid has two heavy-duty gas spring lid lifts.
- Leak-Proof Stainless Steel Paddle Handles and Wide Live Cell Weather Stripping prevent moisture and dust from getting inside.

## Aluminum Transfer Tanks



99-Gallon Capacity  
L-Shaped Model 437000



91-Gallon Capacity  
Rectangular Model 438000



47-Gallon Capacity  
Square Model 439000

Delta Aluminum Transfer Tanks are designed for the toughest conditions. Made of heavy-duty .125 Treadplate Aluminum, the tanks have internal baffles for reinforcement and to control the flow of the contents when moving. All tanks are pressure tested for leaks.

- 2" NPT Reinforced Bungs allow mounting a pump on either side of the tank. Filter system is recommended.
- Lockable Filler Cap and Coupler prevent excessive pressure build up.
- Heavy-Duty Brackets to secure the tank to the truck bed. All brackets must be bolted to the truck bed.



# Steel Liquid Transfer Tanks



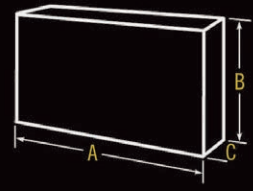
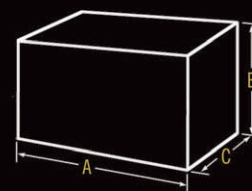
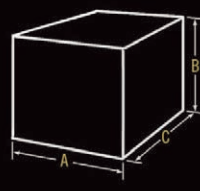
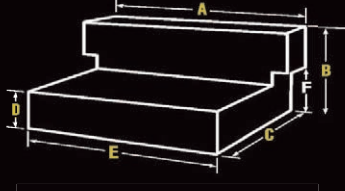
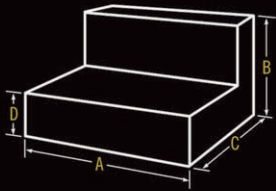
L-Shaped Tank

L-Shaped Tank With Indented Sides

Square Tank

Rectangular Tank

Vertical Tank

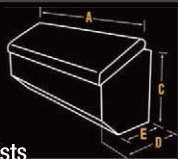


- All Transfer Tanks Feature a 2" Bung Fill Tube which protrudes into the tank to help limit the capacity and allow space in the tank for expansion of the contents due to warm weather.
- The Safety Capacity is the MINIMUM capacity of the tank when filled to the bottom of the Bung Fill tube....not the maximum capacity of the tank.
- The Maximum Gallon Capacity is also shown in the chart.



White Model #	Black Model #	Shape	Safety Fill Capacity (Gals.)*	Maximum Fill Capacity (Gals.)	Dimensions				Shipping Cubic Feet	Approx. Shipping Weight Lbs.
					A	B	C	D		
<b>Steel Transfer Tanks For 4-Door Trucks</b>										
498000	498002	L-Shaped: F-N-T Ready	98	106	60"	25"	33"	7 1/2"	17.8	175.0
<b>Steel Transfer Tanks</b>										
480000	-	L-Shaped	103	109	59 5/8"	25"	31"	9"	31.2	200.0
481000	-	L-Shaped	56	59	37"	21"	31"	9"	19.2	124.5
482000	-	L-Shaped	51	54	29 5/8"	25"	31"	9"	15.6	106.0
484000	-	Rectangular	96	107	45 1/4"	24"	23 1/4"	-	17.1	144.5
485000	-	Square	50	55	23 1/4"	24"	23 1/4"	-	8.9	85.5
486000	-	Vertical F-N-T Ready	37	42	59 5/8"	19"	9"	-	7.0	97.0
487000	-	Low-Profile L-Shaped	86	92	54"	25"	31"	6 1/2"	30.4	186.0
488000	488002	Low-Profile L-Shaped	76	82	48"	25"	31"	6 1/2"	27.1	155.0

\* Capacity includes a safety reserve to allow for expansion of the contents in warm weather.



Model #

Size

Dimensions

Steel Chests

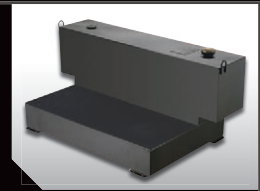
Model #	Size	Dimensions								Usable Cubic Feet	Shipping Cubic Feet	Approx. Shipping Weight Lbs.
		A	B	C	D	E	F	G				
499000 for 498000 tank	60" Chest	60 1/4"	48"	17 5/8"	13 7/8"	19 5/8"	17 5/8"	60 5/8"	6.7	9.1	85.0	
430000 for 486000 tank	48" Slope Lid Chest	48 7/8"	—	22 1/4"	16 1/8"	10 3/4"	—	—	7.3	10.8	70.0	

## Steel Transfer Tanks For Short Bed Trucks

Delta Model 498000 and 498002 Transfer Tanks are made for short bed trucks – including trucks with 4-door cabs. The unique design has extended sides above both wheel wells to increase the capacity.



98-Gallon Capacity Model 498000



Black Finish Model 498002

### Steel Transfer Tanks



103-Gallon Capacity  
L-Shaped Model 480000



96-Gallon Capacity  
Rectangular Model 484000



37-Gallon Capacity  
Vertical Model 486000



50-Gallon Capacity  
Square Model 485000

Delta Tanks feature 14-gauge construction for long-term durability. Internal baffles reinforce the high-strength design and control the flow of the contents when moving. All tanks are pressure tested for leaks.

- Internal Baffles add extra strength and control the flow of the contents when moving.
- 2" NPT Reinforced Bunges allow convenient use from either side. Filter system recommended.
- Built-in Lifting Rings to assist with lifting and moving an EMPTY tank.
- Lockable Filler Cap and Coupler prevent excessive pressure build up.
- Heavy-Duty Brackets to secure the tank to the truck bed. All brackets must be bolted to the truck bed.

## Steel Fuel-N-Tool™ Transfer Tanks and Chests



499000 Chest  
+ 498000 98 Gallon Capacity Tank

- Fits all fullsize short wheelbase trucks
- 60" Chest with 6.7 cu. ft. storage space
- Dual paddle handles for convenient opening of lid
- 98\* gallon tank capacity



430000 Chest  
+ 486000 37 Gallon Capacity Tank

- Fits all fullsize short wheelbase trucks
- Angled chest allows use with fifth wheel trailers
- 48" Chest with 7.3 cu. ft. storage space
- Paddle handle for convenient opening of lid
- 37\* gallon tank capacity



Quick and easy  
4-point installation



# Heavy-Duty Chests, Slope Lid & Piano Box



Slope Lid Model 649990



Model #	Size	Dimensions			Usable Cubic Feet	Shipping Cubic Feet	Approx. Shipping Weight Lbs.
		L	H	W			
<b>Heavy-Duty Chests</b>							
635990	36" Long Chest	36"	22"	19 1/2"	6.8	9.6	85.0
636990	42" Long Chest	42"	23 1/2"	20"	9.3	12.2	101.0
637990	48" Long Chest	48"	27 1/2"	24"	15.4	19.3	133.0
638990	60" Long Chest	60"	27 1/2"	24"	19.2	24.1	155.0
<b>Heavy-Duty Piano Box</b>							
640990	60" Long Piano Box	60"	49 7/8"	30 1/2"	48.0	55.0	308.0
<b>Heavy-Duty Slope Lid Chest</b>							
649990	60" Long Slope Lid Chest	60"	39 1/2"	30"	32.7	45.5	243.0
<b>Optional Casters (Set Of 4 - 2 Swiveling &amp; 2 Fixed, 3" x 3" Hole Patterns)</b>							
1-320990	4"	-	-	-	-	-	15.0
1-321990	6"	-	-	-	-	-	19.0
1-324990	8"	-	-	-	-	-	31.0

## Removable Trays



Removable Trays With Built-In Handles For Storing Small Parts Or Tools. Hemmed Edges Add Strength And Eliminate Sharp Edges

JOBSITE Chest Model #	Tray Model #
635990	620990
636990	628990
637990	626990
638990	626990

## Heavy-Duty Chests



Chest Model 635990

Chest Model 637990

Steel Body and Lid provide superior security for tools and equipment. Bolt Cutter Proof Locking System protects the padlocks\* inside 12-gauge steel housings. Only the bottoms of the padlocks are exposed. They can not be cut, pulled or pried out.

\* Padlocks not included.

- Heavy-Duty Hinge is staked and welded to prevent the pin from being driven out to break in.
- Lifting Handles are protected inside tall, deep recesses to prevent pinched knuckles and damage.
- Heavy-Duty Locking Arm secures the lid in the open position.
- Tall Bottom Bolsters for easily moving a loaded chest with a forklift.
- Rain-Drain Feature in padlock housing prevents water from collecting in box.



Indented Area On The Front Of The Lid Is Easy To Grip.



Slots In The Bolsters For Easy Access To Install Optional Casters.



Set Of Four 4" or 6" Optional Casters: Two Swivel, Two Fixed.

## Heavy-Duty Piano Box



Piano Box Model 640990

The JOBSITE Piano Box has 48 cubic feet of flexible storage space. Heavy-loads can be stored on the two full-length shelves. The bottom shelf tilts up for easier access to load bulky items. Deep, wide bolsters and a 12-gauge steel bottom flange add incredible strength to the door. Wide flanges reinforce the body to resist bending. Bolt Cutter Proof Locking System protects the padlocks\* inside 12-gauge steel housings. Only the bottoms of the padlocks are exposed. They can not be cut, pulled or pried out.

\* Padlocks not included.

- Two Gas Springs assist with opening and closing the door.
- Lifting Handles are protected inside tall, deep recesses to prevent pinched knuckles and damage.
- Tall Bottom Bolsters for easily moving a loaded Piano Box with a forklift.
- Rain-Drain Feature in padlock housing prevents water from collecting in box.



Slots In The Bolsters For Easy Access To Install Optional Casters.



Set Of Four 4" or 6" Optional Casters: Two Swivel, Two Fixed.

# KARGO MASTER®

KargoMaster offers commercial-duty truck and van racks that are easy to install and adjust to your custom needs.

All the racks have a yellow zinc dichromate undercoat and tough marine-grade powder coat epoxy finish for superior corrosion resistance and long-term durability.

With a full breadth of truck and van racks and accessories, KargoMaster delivers superior fit, durability and maximum convenience. Plus they have Lifetime Frame Warranty.



PRO III™ Ladder Racks adjust to fit short or long bed trucks. The height adjusts to fit taller cabs. We offer a fit for every truck. One model fits ALL Fullsize trucks. The other model fits ALL Compact and Mid-size trucks.



Quick Pac™ Racks are ideal for occasional use — they are easy to insert in the mounting bases and easily lift out of the bases. Quick Pac Racks can also be left in the bases permanently.



Econo™ Racks will support up to 500 pounds of cargo. Long mounting plates provide stability without horizontal connecting bars between the two racks. The racks are free-standing and provide a wide area for easily accessing cargo.



2-Bar and 3-Bar Van Racks have telescoping cross bars to fit any width fullsize van with rain gutters. The heavy-duty clamp-on mounting brackets allow the cross bars to be set at one of three heights above the van roof for proper clearance.



KargoMaster PRO II™ Ladder Racks will support up to 1,700-pound loads. These heavy-duty racks have load-bearing 2" diameter steel tubing components. All joints are swaged for increased strength. Large gussets on the cross bars add additional strength and rigidity.





# PRO IV™ Aluminum & PRO III™ Steel Adjustable Ladder Racks & Quick Pac™ Racks



## Steel

The unique design of the 1,000-lb. capacity Steel KargoMaster PRO III Ladder Racks allows the legs to be easily positioned to fit trucks with Short or Long Beds and with Standard, Extended or 4-Door Crew Cabs. No cutting is required. The height of these racks can be easily raised to fit trucks with taller cabs.

## Aluminum

Swaged joints and fully gusseted crossbars for superior load capacity and the abrasion and corrosion resistant polyester marine-grade ClearCoat powder paint finish make the PRO IV Aluminum Ladder Rack a perfect choice. Triple-plated fasteners with chrome plating over double nickel plating. The optional "No Drill" Clamp-On Mounts eliminate drilling holes to mount the rack.

- See pages 56-57 for Optional Full-Length Bed Rail Mounts and other Ladder Rack accessories.



Model #	Description	Shipping Cubic Feet	Approx. Shipping Weight lbs.
<b>PRO III Steel Adjustable Ladder Racks</b>			
L80000	155" Long Ladder Rack Fits ALL Fullsize Trucks	6.9	150.0
L80020	142" Long Ladder Rack Fits ALL Mid-Size and Compact Trucks	6.9	140.0
A31580	No-Drill, Clamp-On Mounting Kit: Set Of 4	0.8	4.0
A31600	Optional Bolt-On 4th Cross Bar For PRO III Model L80000	0.5	12.0
<b>PRO IV Aluminum Adjustable Ladder Racks</b>			
L90000	Aluminum Fully-Adjustable Ladder Rack Fits ALL Fullsize Trucks	8.1	95.0
A31580	No-Drill, Clamp-On Mounting Kit: Set Of 4	0.4	12.0
A31690	Optional Bolt-On 4th Cross Bar For PRO IV Model L90000		
<b>Quick Pac Removable Ladder Racks</b>			
L30090	Removable Side Ladder Racks	3.5	60.0



### "No Drill" Clamp-On Mounting Kit

- Eliminates Drilling
- Does Not Reduce Load Capacity
- One Kit Needed Per Rack

Model A31580  
Shipping Weight 4 lbs.



**PRO III Steel Adjustable Ladder Racks**  
**PRO IV Aluminum Adjustable Ladder Racks**



**PRO IV Model L90000 Fits All Fullsize Trucks**

**PRO III Model L80000 Fits All Fullsize Trucks**  
**PRO III Model L80020 Fits All Mid-Size and Compact Trucks**

KargoMaster PRO IV Aluminum and PRO III Steel Ladder Racks offer a great combination of features.

- Rugged 14" Long Mounting Plates distribute the load over a large area.
- Removable Rear Cross Bar for improved access to the bed.
- Rear Grab Handles improve safety when loading or unloading the rack or getting to cargo.
- Optional No Drill Clamp-On Mounting Plates eliminate drilling holes in the bed wall.
- 4th Cross Bar is available for the extra support of long cargo on Fullsize Model L80000 and L90000.
- PRO III features Yellow Zinc Dichromate Undercoat and Marine-Grade Powder Coat Epoxy finish provide superior corrosion resistance.
- See pages 56-57 for Optional Full-Length Bed Rail Mounts and other Ladder Rack accessories.

**Removable Quick Pac™ Side Racks**



**Model L30090**



Uprights Are Easy To Install Or Remove From Mounting Bases.

Quick Pac Racks are easy to insert in the mounting bases when needed and simply lift out of the bases until needed again. They can also be left in the bases permanently. The side-mounted racks support 250 pounds and are ideal for occasional use or when a full-length or heavier-duty rack is not required. Width of the racks adjusts from 18" to 32" to support different types and sizes of cargo.

- High-Strength Mounting Bases fit in any truck and can be used on either side.
- 1-1/4" Square Steel Uprights have fully welded joints for extra strength and durability.
- Yellow Zinc Dichromate Undercoat and Marine-Grade Powder Coat Epoxy finish provide superior corrosion resistance.



## Econo Racks

A pair of these high-strength racks will support up to 500 pounds of cargo. Long mounting plates provide stability without horizontal connecting bars between the two racks. The free-standing racks provide a wide area for easy access to load and unload bulky cargo from the sides. A crossover truck box can be mounted flush against the front rack creating more free space in the bed.

- High-Strength 2" Diameter Steel Racks support up to 500 pounds.
- Cross Bar height can be set at 23-1/2" or 26-1/4" above the bed for trucks with taller cabs.
- Rack width adjusts from 53" to 68" to fit compact and fullsize trucks.
- 14" Long Heavy-Duty Bolt-On Mounting Plates provide stability.
- Yellow Zinc Dichromate Undercoat and Marine-Grade Powder Coat Epoxy finish provide superior corrosion resistance.
- See pages 52-53 for the Water Jug Mount, Load Dividers and Mount For Emergency Light/Antenna Mount that can be used on this rack.



<b>KARGO MASTER</b>			Dimensions		Shipping Cubic Feet	Approx. Shipping Weight Lbs.
Model #	Description	W	H			
<b>Free-Standing Econo Racks</b>						
L30050	Front-Mounted Econo Rack	53" to 68"	23 1/2" to 26 1/4"	1.8	35.0	
<b>Fullsize Rack Cab Guard Rack</b>						
L30080	Fullsize Cab Guard Rack	53" to 68"	23 1/2" to 26 1/4"	2.9	60.0	
<b>PRO II™ Heavy Duty Material Rack</b>						
40880	Side Channel Kit			6.7	85.0	
40870	Feet and Bars Kit			3.0	70.0	
White Model #	Black Model #	Description				
<b>2-Bar &amp; 3-Bar Fullsize Van Racks</b>						
40823	40820	2 Cross Bar Rain Gutter Mount		1.3	40.0	
40833	40830	3 Cross Bar Rain Gutter Mount		1.3	60.0	



### Optional "No Drill" Clamp-On Mounting Kit For Model L30040

- Eliminates Drilling
- Does Not Reduce Load Capacity
- One Kit Needed Per Rack

Model A31580  
Shipping Weight 4 lbs.

## Econo Fullsize Cab Guard Rack

Heavy-Duty 16-Gauge Steel Cab Guard protects the rear of the cab and rear window from shifting cargo. It will support long items above the cab eliminating the hazard of long items sticking out the rear of the truck. A crossover truck box can be mounted flush against the rack.

- Rack adjusts from 53" to 68" to cover all width cabs.
- High-Strength 2" Diameter Steel Rack supports up to 250 pounds.
- Cross Bar height can be set at 23-1/2" or 26-1/4" above the bed for trucks with taller cabs.
- 14" Long Heavy-Duty "No Drill" Clamp-On Mounting Plates provide stability.
- Yellow Zinc Dichromate Undercoat and Marine-Grade Powder Coat Epoxy finish provide superior corrosion resistance.
- See pages 52-53 for the Load Dividers and Mount For Emergency Light/Antenna Mount that can be used on this rack.



Model L30080

## PRO II™ Industrial-Grade Racks for Fullsize Vans with Rain Gutters

This heavy-duty material rack supports up to 1,700 lb. cargo loads. The rack stretches the full length of the van and uses wide mount feet to securely clamp to the rain gutter. It includes 4 Heavy-Duty 2" diameter crossbars to fully support both long and short loads.

- Full Length of Van (165" L x 55" W)
- 4 Heavy-Duty 2" Diameter Crossbars to full support long and short loads
- Rear roller bar makes it easier to load heavy, bulky items (e.g. carpet) and protects top of the van
- Level cross bars support sheet goods, elevated standing platform, lumber, ladders, pipes, etc.
- Wide mount feet clamp securely to rain gutter. Feet are coated at bottom to protect rain gutter paint
- Each model fits full-sized Ford, GM, and older pre-Sprinter Dodge.
- No drilling or cutting required.
- Zinc epoxy primed for superior rust resistance. Chip resistant black or white powder coat.



Model 40880 & 40870

## 2-Bar & 3-Bar Fullsize Van Racks



3-Bar Van Rack Model 40830

High-strength 1-5/8" diameter telescoping steel racks adjust to fit different width fullsize vans with rain gutters. Heavy-duty mounting brackets allow positioning the cross bars at different heights to provide proper clearance and reduce wind noise. EZ-Mount Clamps secure the brackets on the rain gutters. They are easy to install or remove. Use 3-Bar Rack for more support of longer or heavier loads.

- 3-Bar Rack will support up to 500 lbs.
- Yellow Zinc Dichromate Undercoat and Marine-Grade Powder Coat Epoxy finish provide superior corrosion resistance.
- See pages 52-53 for the Load Dividers and Mount For Emergency Light/Antenna Mount that can be used on these racks.

# KARGO MASTER PRO II™ Industrial-Grade Ladder Racks



KargoMaster PRO II Ladder Racks are made for superior load-carrying capacity and long-term durability. Extra strength and rigidity are provided by swaged joints and large gussets on the cross bars. PRO II Racks are longer than other racks providing superior support and control for heavy loads. They also provide better protection for the cab roof and windshield. There is a KargoMaster PRO II Ladder Rack available to fit every make, model and style of pickup, including pickups with camper or utility shells.

- Made of High Tensile-Strength 2" Diameter Steel Tubing, the load-bearing components will support up to 1,700 pounds.
- Removable Fourth Cross Bar keeps longer, heavier loads from sagging.
- Rear Cross Bar is removable for easier access when loading taller or bulky cargo.
- Smooth, Round Components reduce wind noise and resistance.
- Yellow Zinc Dichromate Undercoat and Marine-Grade Powder Coat Epoxy finish provide superior corrosion resistance.
- See pages 52-53 for Ladder Rack accessories.

## PRO II Ladder Rack Application Guide

A Complete PRO II Ladder Rack Requires Ordering A Side Channel AND A Leg & Cross Bar Kit.

### Mounting Options:

- All Pickup Truck Racks include four Standard Mounting Plates.
- To spread the load of heavy cargo on the Rack over a larger area, order the optional Full-Length Bed Rail Support Mounts. These distribute the load over the length of the Bed Rails.
- To eliminate drilling holes in the top of the Bed Rail, use the optional "No Drill" Clamp-On Mounting Kit to secure the Rack to the truck.

Note: Due to the thin bed sheet metal in 1999 and up Silverado, Sierra and all Tundra models, we urge you to order the optional Full-Length Bed Rail Support Mounts to prevent damage to the truck.

### Pickup Trucks WITHOUT Camper Or Utility Shell:

A Rack Requires Both Kits:

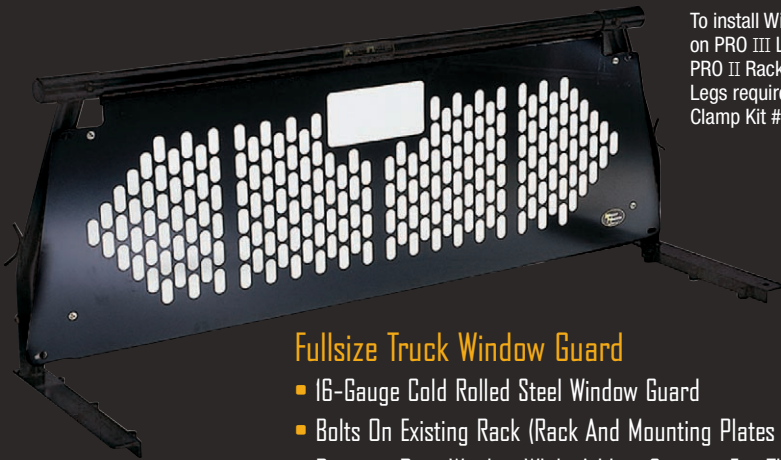
Type Of Truck	Year	Side Channel Kit	Leg & Cross Bar Kit
<b>STANDARD CAB TRUCKS... NO CAMPER OR UTILITY SHELL</b>			
Fullsize - Long Or Short Bed Racks All Ford F Series, Silverado, Ram, Sierra & Tundra	All	S04000	L01000
Compact - Long Or Short Bed Racks S-10, Ranger, Sonoma, SR5 & Tacoma Note: Short Bed Applications Simply Require Cutting To Shorten Upper Side Channels	All	S03000	L02000
<b>EXTENDED CAB &amp; CREW CAB - LONG BED TRUCKS... NO CAMPER OR UTILITY SHELL ON TRUCK</b>			
Fullsize - Long Bed Racks Extended Cab: Silverado, Ram, Sierra, Tundra, F250 & F350 Crew Cab: F250 & F350 Crew Cab: Silverado, Sierra & Ram	All 1999 & Up All	S06000 S06000 S06000	L01000 L01040 L01000
<b>EXTENDED CAB AND CREW CAB – SHORT BED TRUCKS... NO CAMPER OR UTILITY SHELL ON TRUCK</b>			
Fullsize - Short Bed Racks Extended Cab: F150, Silverado, Sierra, Ram, Tundra, F250 & F350 Crew Cab: F250 & F350 Crew Cab: Silverado, Sierra & Ram	All 1999 & Up All	S06010 S06010 S06010	L01000 L01040 L01000
Compact - Short Bed Racks For Extended & Crew Cabs Dakota Ranger, S-10, Sonoma, SR5 & Tacoma	All All	S03120 S03030	L02000 L02000

### Pickup Trucks WITH Camper Or Utility Shell:

A Rack Requires Both Kits:

Type Of Truck	Year	Side Channel Kit	Leg & Cross Bar Kit
<b>STANDARD CAB TRUCKS... WITH CAMPER OR UTILITY SHELL</b>			
Fullsize - Long Bed Racks F150, Silverado, Ram, Sierra & Tundra F250 & F350	All 1999 & Up	S04000 S04000	L01110 L01130
Compact - Long Bed Racks Sonoma, SR5 & Tacoma	All	S03000	L02110
<b>EXTENDED CAB &amp; CREW CAB - LONG BED TRUCKS... WITH CAMPER OR UTILITY SHELL ON TRUCK</b>			
Fullsize - Long Bed Racks Silverado, Ram & Sierra F250 & F350	All 1999 & Up	S06000 S06000	L01110 L01130
<b>EXTENDED CAB &amp; CREW CAB - SHORT BED TRUCKS... WITH CAMPER OR UTILITY SHELL ON TRUCK</b>			
Fullsize - Short Bed Racks Silverado, Sierra & Ram F150 F250 & F350	All 1997 & Up 1999 & up	S06010 S06010 S06010	L01110 L01110 L01130
Compact - Short Bed Racks S-10, Sonoma, SR5 & Tacoma Ranger	All 1993 & Up	S03030 S03320	L02110 L02130
Note: 2002 & Up Ram Requires Cutting Of S06010 Upper Side Channels. Does Not Effect Strength			

# KARGO MASTER Ladder Rack Accessories



To install Window Guard on PRO III L80000 Rack or PRO II Rack using L01040 Legs requires ordering Clamp Kit # A3108A.

## Fullsize Truck Window Guard

- 16-Gauge Cold Rolled Steel Window Guard
- Bolts On Existing Rack (Rack And Mounting Plates Not Included)
- Protects Rear Window While Adding Support For The Rack
- Rugged Powder Coat Paint Finish
- 3rd Brake Light Cut Out

Black Model A31080  
Ship Weight 22 lbs.



## Wind Deflector To Reduce Wind Noise

- Mounts On Front Bar To Reduce Wind Noise Created By Some Truck Designs

Black Model A31570  
Ship Weight 6 lbs.



## Water Jug Mount

- Mount Allows Quick Access To Load Or Remove Jug
- Water Jug Not Included

Model A31160  
Ship Weight 8 lbs.



## Load Dividers

- Pair Of Load Dividers Clamp On Cross Bar To Help Control Cargo
- Prevents Conduit Or Long Material From Spreading Out
- Can Be Used On Both Sides Or One Side Of Cargo
- Dividers Have Holes To Easily Secure Cargo

Model A31020  
Ship Weight 10 lbs.



## Conduit Box Kit

- Box Helps Control And Secure Conduit Or Piping On The Rack
- Mounting Hardware Included

Model A31000  
Ship Weight 12 lbs.



## Utility Hook

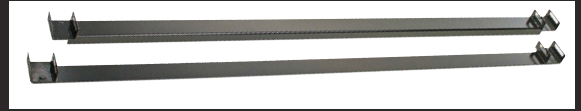
- Bolt-On Steel Hook Holds Coiled Materials Within Easy Reach
- Long Upright Provides A Second Hanging Point Inside The Bed

Model A31150  
Ship Weight 4 lbs.



### Optional Full-Length Bed Rail Support Mounts

- Full-Length Supports Distribute The Load Over The Entire Length Of The Bed Rails



#### Mounts For Trucks WITHOUT Camper \ Utility Shell

- |                             |                     |
|-----------------------------|---------------------|
| '05 Tacoma 72" Model A31270 | Ship Weight 30 lbs. |
| 78" Bed Model A31280        | Ship Weight 40 lbs. |
| 96" Bed Model A31300        | Ship Weight 50 lbs. |



#### Mounts For Trucks WITH Camper \ Utility Shell Set Of Two Mounts

- |                      |                      |
|----------------------|----------------------|
| 78" Bed Model A31400 | Ship Weight 90 lbs.  |
| 96" Bed Model A31420 | Ship Weight 100 lbs. |

Mounts Include A 1" Tube Welded To The Outside Of The Mounts Providing Tie-Down Points



### Bed Supports For Fullsize Trucks

- Adjustable Strut Transfers 50% Of The Vertical Load From Bed Walls To The Bed Floor
- Bolts On Front Mounting Plate
- Set Includes Two Struts

Model A31040  
Ship Weight 5 lbs.



### Ratchet Strap Tie Downs

- Ratchet Straps Secure Cargo To The Rack
- Bolt-On System Can Be Easily Moved
- Set Includes Two Ratchet Straps

Model A31490  
Ship Weight 30 lbs.



### Extra Cross Bar

- Add Extra Cross Bar On The Rack To Support Heavy Or Long Cargo
- Bolts On Side Channels
- For PRO III Racks — Model A31600

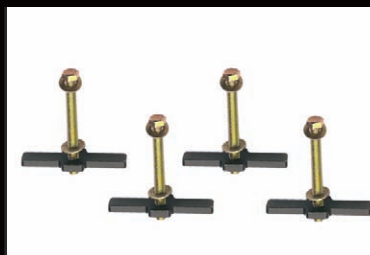
Ship Weight 12 lbs.



### Mount For Emergency Light / Antenna

- Mount Clamps On Side Channel
- Emergency Light Antenna Not Included

Model A31170  
Ship Weight 3 lbs.



### Stake Pocket T-Bolts

- Use To Bolt Mounting Plate In Stake Pockets
- Easy To Install Or Remove
- Set Of Four T-Bolts

Model A31560  
Ship Weight 2 lbs.



### "No Drill" Clamp-On Mounting Kit

- Securely Clamps On PRO II, PRO III And Econo Rack Model L30040 Racks
- Eliminates Drilling
- Does Not Reduce Load Capacity
- One Kit Needed Per Rack

Model A31580  
Ship Weight 4 lbs.

Truck Lengths SWB = Short Wheelbase Model LWB = Long Wheelbase Model	Lid Style	Size	LIMITED EDITION	Low-Profile	Single Lid					
			Single Lid Deep Super Duty & Fullsize Deep	Single Lid Fullsize	Fullsize	Deep Fullsize	73" Long	Super Deep Fullsize	Compact	Mid-Size
Bright Aluminum Model #			1701000	PAC1357000	PAC1580000	PAC1582000	PAC1584000	PAC1585000	PAC1587000	PAC1589000
Black Aluminum Model #			-	PAC1357002	PAC1580002	PAC1582002	PAC1584002	PAC1585002	PAC1587002	PAC1589002
White Steel Model #										
Black Steel Model #										

## Chevrolet and GMC Trucks

1500, 2500, & 3500 SWB	<b>X</b>	<b>X</b>	<b>X</b>	<b>X</b>						
1500, 2500, & 3500 LWB	<b>X</b>	<b>X</b>	<b>X</b>	<b>X</b>			<b>X</b>			
1500 Stepside										
1500 SWB 4-Dr. Cab	<b>X</b>		<b>X</b>	<b>X</b>						
S10 and S15 SWB & LWB								<b>X</b>	<b>X</b>	
S10 and S15 Stepside										
S10 and S15 4-Dr. Cab								<b>X</b>	<b>X</b>	
Canyon and Colorado								<b>X</b>	<b>X</b>	

## Ford Trucks

F-150, 250 & 350 SWB 6.5' Bed '87+	<b>X</b>	<b>X</b>	<b>X</b>	<b>X</b>						
F-150, 250 & 350 LWB Bed '87+	<b>X</b>	<b>X</b>	<b>X</b>	<b>X</b>			<b>X</b>			
F-150 Flareside '97+										<b>X</b>
F-150 Flareside '87 Thru '96										
F-150 Super Crew 4-Dr. Cab	<b>X</b>		<b>X</b>							
F-250 & 350 Super Duty '04+	<b>X</b>	<b>X</b>	<b>X</b>	<b>X</b>	<b>X</b>					
Explorer Sport Trac										
Ranger SWB & LWB								<b>X</b>		
Ranger Std. & Super Cab								<b>X</b>		
Ranger Edge								<b>X</b>		

## Dodge Trucks

RAM 1500 SWB			<b>X</b>		<b>X</b>					
RAM 1500 LWB			<b>X</b>		<b>X</b>					
RAM 1500 4-Dr. Crew Cab			<b>X</b>		<b>X</b>					
RAM 2500 LWB		<b>X</b>	<b>X</b>	<b>X</b>	<b>X</b>	<b>X</b>				
RAM 2500 4-Dr. Crew Cab LWB		<b>X</b>	<b>X</b>	<b>X</b>	<b>X</b>	<b>X</b>				
RAM 3500		<b>X</b>	<b>X</b>	<b>X</b>	<b>X</b>	<b>X</b>				
Dakota - All Models										<b>X</b>

## Mazda Trucks

B2500 All Models										
------------------	--	--	--	--	--	--	--	--	--	--

## Nissan Trucks

Titan King	<b>X</b>	<b>X</b>	<b>X</b>	<b>X</b>			<b>X</b>			
Titan Crew	<b>X</b>	<b>X</b>	<b>X</b>	<b>X</b>						
Frontier '06+										<b>X</b>
Frontier All Models Thru '05								<b>X</b>		

## Toyota Trucks

Tacoma All Models Thru '04								<b>X</b>		
Tacoma All Models '05+										<b>X</b>
Toyota T-100 / T-150										
Tundra Std. & Access Cab Thru '06	<b>X</b>	<b>X</b>	<b>X</b>	<b>X</b>	<b>X</b>	<b>X</b>				
Tundra 4-Door Cab	<b>X</b>	<b>X</b>	<b>X</b>	<b>X</b>	<b>X</b>	<b>X</b>				
Tundra Stepside '02+								<b>X</b>		



# Steel Crossovers

Mid-Lid Dual Lid		Rear-Hinged Dual Lid	Single Lid				Gull Wing Dual Lid	
Fullsize	Compact	Fullsize	Fullsize	Deep Fullsize	Deep & Wide Fullsize	Compact	Fullsize	Deep Fullsize
PAC1596000 -	PAC1597000 -	PAC1598000 -						
			PSC1455000 PSC1455002	PSC1456000 PSC1456002	PSC1457000 PSC1457002	PSC1458000 PSC1458002	PSC1460000 PSC1460002	PSC1461000 PSC1461002
<b>X</b>			<b>X</b>	<b>X</b>			<b>X</b>	<b>X</b>
<b>X</b>			<b>X</b>	<b>X</b>	<b>X</b>		<b>X</b>	<b>X</b>
<b>X</b>			<b>X</b>	<b>X</b>			<b>X</b>	<b>X</b>
	<b>X</b>	<b>X</b>				<b>X</b>		
	<b>X</b>	<b>X</b>				<b>X</b>		
	<b>X</b>	<b>X</b>				<b>X</b>	<b>X</b>	
<b>X</b>			<b>X</b>	<b>X</b>			<b>X</b>	<b>X</b>
<b>X</b>			<b>X</b>	<b>X</b>	<b>X</b>		<b>X</b>	<b>X</b>
<b>X</b>			<b>X</b>				<b>X</b>	
			<b>X</b>	<b>X</b>	<b>X</b>		<b>X</b>	<b>X</b>
<b>X</b>			<b>X</b>	<b>X</b>	<b>X</b>		<b>X</b>	<b>X</b>
						<b>X</b>		
	<b>X</b>	<b>X</b>				<b>X</b>		
<b>X</b>			<b>X</b>	<b>X</b>			<b>X</b>	<b>X</b>
<b>X</b>			<b>X</b>	<b>X</b>	<b>X</b>		<b>X</b>	<b>X</b>
	<b>X</b>	<b>X</b>				<b>X</b>		
<b>X</b>			<b>X</b>	<b>X</b>	<b>X</b>		<b>X</b>	<b>X</b>
<b>X</b>			<b>X</b>	<b>X</b>	<b>X</b>		<b>X</b>	<b>X</b>
	<b>X</b>	<b>X</b>				<b>X</b>		



# Aluminum Crossovers

Truck Lengths SWB = Short Wheelbase Model LWB = Long Wheelbase Model	Lid Style Size	Gear-Lock™ Low-Profile Single Lid		Gear-Lock™ Single Lid		Gear-Lock™ Mid-Lid	
		Fullsize	Fullsize	Compact	Fullsize		
Bright Aluminum Model #		1-351000	1-232000	1-235000	1-238000		
Black Aluminum Model #		1-351002	1-232002	-	1-238002		

## Chevrolet and GMC Trucks

1500, 2500, & 3500 SWB	<b>X</b>	<b>X</b>		<b>X</b>
1500, 2500, & 3500 LWB	<b>X</b>	<b>X</b>		<b>X</b>
1500 Stepside				
1500 SWB 4-Dr. Cab	<b>X</b>	<b>X</b>		<b>X</b>
S10 and S15 SWB & LWB				
S10 and S15 Stepside				
S10 and S15 4-Dr. Cab				
Canyon and Colorado			<b>X</b>	

## Ford Trucks

F-150, 250 & 350 SWB 6.5' Bed '87+	<b>X</b>	<b>X</b>		<b>X</b>
F-150, 250 & 350 LWB Bed '87+	<b>X</b>	<b>X</b>		<b>X</b>
F-150 Flareside '97+	<b>X</b>	<b>X</b>		
F-150 Flareside '87 Thru '96				
F-150 Super Crew 4-Dr. Cab				
F-250 & 350 Super Duty '04+				
Explorer Sport Trac				
Ranger SWB & LWB			<b>X</b>	
Ranger Std. & Super Cab			<b>X</b>	
Ranger Edge				

## Dodge Trucks

RAM 1500 SWB		<b>X</b>		<b>X</b>
RAM 1500 LWB		<b>X</b>		<b>X</b>
RAM 1500 4-Dr. Crew Cab		<b>X</b>		<b>X</b>
RAM 2500 LWB				
RAM 2500 4-Dr. Crew Cab LWB				
RAM 3500				
Dakota - All Models			<b>X</b>	

## Mazda Trucks

B2500 All Models				
------------------	--	--	--	--

## Nissan Trucks

Titan King	<b>X</b>	<b>X</b>		<b>X</b>
Titan Crew	<b>X</b>	<b>X</b>		<b>X</b>
Frontier '06+			<b>X</b>	
Frontier All Models Thru '05				

## Toyota Trucks

Tacoma All Models Thru '04			<b>X</b>	
Tacoma All Models '05+			<b>X</b>	
Toyota T-100 / T-150				
Tundra Std. & Access Cab Thru '06	<b>X</b>	<b>X</b>		<b>X</b>
Tundra 4-Door Cab	<b>X</b>	<b>X</b>		<b>X</b>
Tundra Stepside '02+				



## VALUE Aluminum Crossovers

## Structural Foam Crossover

Truck Lengths

Lid Style

SWB = Short Wheelbase Model

LWB = Long Wheelbase Model

Size

Bright Aluminum Model #  
Structural Foam Model #

### Single Lid

### Mid-Lid Dual Lid

### Mid-Lid

Fullsize

Compact

Fullsize

Compact

Fullsize

Compact

942000

943000

940000

941000

203000

204000

### Chevrolet and GMC Trucks

1500, 2500, & 3500 SWB

**X**

**X**

**X**

1500, 2500, & 3500 LWB

**X**

**X**

**X**

1500 Stepside

1500 SWB 4-Dr. Cab

**X**

**X**

**X**

S10 and S15 SWB & LWB

S10 and S15 Stepside

S10 and S15 4-Dr. Cab

Canyon and Colorado

**X**

**X**

**X**

### Ford Trucks

F-150, 250 & 350 SWB 6.5' Bed '87+

**X**

**X**

**X**

F-150, 250 & 350 LWB Bed '87+

**X**

**X**

**X**

F-150 Flareside '97+

**X**

F-150 Flareside '87 Thru '96

F-150 Super Crew 4-Dr. Cab

F-250 & 350 Super Duty '04+

Explorer Sport Trac

Ranger SWB & LWB

**X**

**X**

**X**

Ranger Std. & Super Cab

**X**

**X**

**X**

Ranger Edge

### Dodge Trucks

RAM 1500 SWB

**X**

**X**

**X**

RAM 1500 LWB

**X**

**X**

**X**

RAM 1500 4-Dr. Crew Cab

**X**

**X**

**X**

RAM 2500 LWB

**X**

**X**

RAM 2500 4-Dr. Crew Cab LWB

**X**

**X**

RAM 3500

**X**

**X**

**X**

Dakota - All Models

**X**

**X**

### Mazda Trucks

B2500 All Models

### Nissan Trucks

Titan King

**X**

**X**

**X**

Titan Crew

**X**

**X**

**X**

Frontier '06+

**X**

**X**

Frontier All Models Thru '05

### Toyota Trucks

Tacoma All Models Thru '04

**X**

**X**

Tacoma All Models '05+

**X**

**X**

Toyota T-100 / T-150

Tundra Std. & Access Cab Thru '06

**X**

**X**

**X**

Tundra 4-Door Cab

**X**

**X**

**X**

Tundra Stepside '02+





# Aluminum Crossovers

Truck Lengths SWB = Short Wheelbase Model LWB = Long Wheelbase Model	Lid Style	Low-Profile Single Lid			Single Lid					
		Fullsize	Fullsize	Mid-Size	Fullsize	Deep Fullsize	Fullsize	Mid-Size	Fullsize	Slimline Fullsize
Bright Aluminum Model #	Size	1-302000	1-309000	1-310000	1-300000	1-301000	1-303000	1-304000	1-308000	1-311000
Black Aluminum Model #		1-302002	1-309002	1-310002	1-300002	1-301002	1-303002	1-304002	1-308002	1-311002
White Steel Model #										
Black Steel Model #										

## Chevrolet and GMC Trucks

1500, 2500, & 3500 SWB	<b>X</b>	<b>X</b>		<b>X</b>	<b>X</b>	<b>X</b>		<b>X</b>	<b>X</b>
1500, 2500, & 3500 LWB	<b>X</b>	<b>X</b>		<b>X</b>	<b>X</b>	<b>X</b>		<b>X</b>	<b>X</b>
1500 Stepside									
1500 SWB 4-Dr. Cab	<b>X</b>			<b>X</b>	<b>X</b>	<b>X</b>			<b>X</b>
S10 and S15 SWB & LWB			<b>X</b>				<b>X</b>		
S10 and S15 Stepside									
S10 and S15 4-Dr. Cab			<b>X</b>				<b>X</b>		
Canyon and Colorado			<b>X</b>				<b>X</b>		

## Ford Trucks

F-150, 250 & 350 SWB 6.5' Bed '87+	<b>X</b>	<b>X</b>		<b>X</b>	<b>X</b>	<b>X</b>		<b>X</b>	<b>X</b>
F-150, 250 & 350 LWB Bed '87+	<b>X</b>	<b>X</b>		<b>X</b>	<b>X</b>	<b>X</b>		<b>X</b>	<b>X</b>
F-150 Flareside '97+	<b>X</b>		<b>X</b>	<b>X</b>			<b>X</b>		<b>X</b>
F-150 Flareside '87 Thru '96									
F-150 Super Crew 4-Dr. Cab	<b>X</b>	<b>X</b>		<b>X</b>	<b>X</b>			<b>X</b>	
F-250 & 350 Super Duty '04+	<b>X</b>	<b>X</b>		<b>X</b>	<b>X</b>	<b>X</b>		<b>X</b>	
Explorer Sport Trac									
Ranger SWB & LWB									
Ranger Std. & Super Cab			<b>X</b>				<b>X</b>		
Ranger Edge									

## Dodge Trucks

RAM 1500 SWB	<b>X</b>			<b>X</b>	<b>X</b>	<b>X</b>			<b>X</b>
RAM 1500 LWB	<b>X</b>			<b>X</b>	<b>X</b>	<b>X</b>			<b>X</b>
RAM 1500 4-Dr. Crew Cab	<b>X</b>			<b>X</b>	<b>X</b>	<b>X</b>			<b>X</b>
RAM 2500 LWB		<b>X</b>						<b>X</b>	<b>X</b>
RAM 2500 4-Dr. Crew Cab LWB		<b>X</b>						<b>X</b>	<b>X</b>
RAM 3500		<b>X</b>						<b>X</b>	<b>X</b>
Dakota - All Models			<b>X</b>				<b>X</b>		

## Mazda Trucks

B2500 All Models				<b>X</b>				<b>X</b>	
------------------	--	--	--	----------	--	--	--	----------	--

## Nissan Trucks

Titan King	<b>X</b>	<b>X</b>		<b>X</b>	<b>X</b>	<b>X</b>		<b>X</b>	<b>X</b>
Titan Crew	<b>X</b>	<b>X</b>		<b>X</b>	<b>X</b>	<b>X</b>		<b>X</b>	<b>X</b>
Frontier '06+			<b>X</b>				<b>X</b>		
Frontier All Models Thru '05									

## Toyota Trucks

Tacoma All Models Thru '04			<b>X</b>				<b>X</b>		<b>X</b>
Tacoma All Models '05+			<b>X</b>				<b>X</b>		<b>X</b>
Toyota T-100 / T-150	<b>X</b>			<b>X</b>	<b>X</b>				
Tundra Std. & Access Cab Thru '06	<b>X</b>			<b>X</b>	<b>X</b>	<b>X</b>		<b>X</b>	
Tundra 4-Door Cab	<b>X</b>			<b>X</b>	<b>X</b>	<b>X</b>		<b>X</b>	
Tundra Stepside '02+	<b>X</b>		<b>X</b>	<b>X</b>	<b>X</b>	<b>X</b>	<b>X</b>	<b>X</b>	

# Steel Crossovers

Mid-Lid Dual Lid		Single Lid				Gull Wing Dual Lid	
Fullsize	Mid-Size	Fullsize	Deep Fullsize	Compact	Mid-Size	Fullsize	Deep Fullsize
1-306000 1-306002	1-307000 1-307002	904000 -	922000 -	905000 -	906000 -	901000	902000
<b>X</b>		<b>X</b>	<b>X</b>			<b>X</b>	
<b>X</b>		<b>X</b>	<b>X</b>			<b>X</b>	
<b>X</b>		<b>X</b>	<b>X</b>			<b>X</b>	
	<b>X</b>			<b>X</b>	<b>X</b>		<b>X</b>
	<b>X</b>			<b>X</b>	<b>X</b>		<b>X</b>
	<b>X</b>			<b>X</b>	<b>X</b>		<b>X</b>
<b>X</b>		<b>X</b>	<b>X</b>			<b>X</b>	
<b>X</b>		<b>X</b>	<b>X</b>			<b>X</b>	
	<b>X</b>						
<b>X</b>		<b>X</b>				<b>X</b>	
<b>X</b>		<b>X</b>	<b>X</b>			<b>X</b>	
				<b>X</b>			<b>X</b>
	<b>X</b>			<b>X</b>			<b>X</b>
				<b>X</b>			<b>X</b>
<b>X</b>		<b>X</b>				<b>X</b>	<b>X</b>
<b>X</b>		<b>X</b>				<b>X</b>	<b>X</b>
<b>X</b>		<b>X</b>				<b>X</b>	<b>X</b>
		<b>X</b>	<b>X</b>			<b>X</b>	<b>X</b>
	<b>X</b>			<b>X</b>	<b>X</b>		
				<b>X</b>			<b>X</b>
<b>X</b>		<b>X</b>	<b>X</b>			<b>X</b>	
<b>X</b>		<b>X</b>	<b>X</b>			<b>X</b>	
	<b>X</b>				<b>X</b>		
				<b>X</b>			<b>X</b>
	<b>X</b>			<b>X</b>			<b>X</b>
	<b>X</b>				<b>X</b>		
<b>X</b>						<b>X</b>	
<b>X</b>						<b>X</b>	
<b>X</b>						<b>X</b>	
<b>X</b>	<b>X</b>			<b>X</b>		<b>X</b>	<b>X</b>

# How-To Measure Your Truck

The following instructions generally work well when measuring a full-size truck. Mid-size and Compact trucks have a variety of truck bed configurations which increase the difficulty in measuring the truck and comparing it to the dimensions of a specific truck box.

In nearly all instances, the Fitment Guide ( pages 58 through 63) will provide accurate information unless the truck is a new model introduced after April, 2006.

The truck bed needs to be measured for two reasons:

- A. To Determine that the Truck Box will be long enough to be properly mounted on the truck bed rails.
- B. To Determine whether or not the truck wheel wells will interfere and prevent proper mounting of the truck box.

**A: Determining that the truck box is long enough to be properly mounted:**

**Measurement 1:** Width between the top of the bed sidewalls....Dimension "A" of the crossover Truckbox needs to be at least 3" greater.

**B. Determining whether or not the truck box will clear the wheel wells in the truck....Need to find POINT "X" in the truck bed:**

Preparing to take Measurements 2 & 3 to find a point "X" in the truck bed to ensure that the truck box will fit your truck:

- The depth of the truck box may restrict its fit in the truck because the wheel well might be in the way.
- Except for "Extra-Wide" truck boxes, most truck boxes will require 20 1/4" of horizontal space from the cab bed rail to the point where the Truck Box might hit the wheel well or the truck bed liner.

**Measurement 2:** A "Standard" Truck box will usually have a 9" Vertical depth below the top of the truck bed rail. A "Deep" model will usually be 12" below the top of the bed rail.

- Determine how deep a truck box you need and measure down from the top of the rail and create an imaginary, HORIZONTAL line at the depth of the truck box you need...usually 9" or 12" below the top of the truck bed rail. This is called Dimension "C" on the truck box.

**Measurement 3:** Find Point "X" which is on the horizontal "Imaginary Line" below the truck rail (from "2" above).

On the horizontal "Imaginary Line"....Measure to find a point 20 1/4" away from the front truck bed rail (This measurement is from the Cab Truck Bed Rail Towards the Tailgate).

The 20 1/4" is roughly Dimension "E" on the truck box and represents how much space the truck box will take in the bed behind the truck cab.

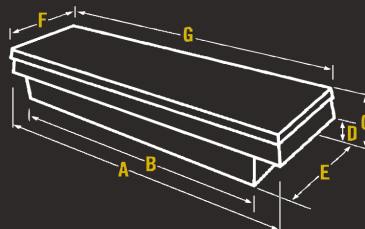
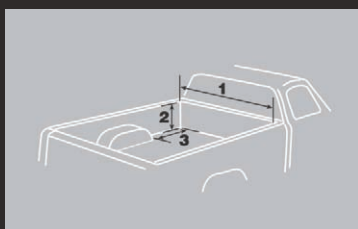
After finding Point "X" in your Truck Bed....will the truck box fit ?:

Again, Point "X" is 20 1/4" away from the front truck cab rail on the Imaginary Horizontal Line (from measurement 2)

If point "X" does not hit the wheel well, the truck box will fit.

If point "X" hits the Wheel Well, you must make another measurement:

- Mark Point "X" on both wheel wells or the wheel well bed liner
- Measure the distance between the two point "X"s on the truck bed. This dimension must be greater than Dimension "B" on the Truckbox
- If Dimension "B" on the truck box is GREATER than the distance between both point "X"s, the truck box will hit the wheel well or bed liner and you will usually need to select another truck box or mount the truck box with a spacer above the bed rail.



# Product Warranty Information

## All Delta Products Carry The Following Warranty:

Delta Consolidated Industries (DCI) warrants that this product is free from defects in materials and workmanship at the time of the sale. This warranty does not cover damage caused by accident or unreasonable or unintended use of the product. Modification, disassembly and/or re-assembly of the product will invalidate this warranty. Damage to the contents of the box, vehicle or other consequential damages is excluded from this warranty.

In the case of a nonconforming product, you should return the product to the point of purchase or an authorized Delta retail/dealer store. The seller will either repair or replace the product at their option if the product should prove to be defective in material or workmanship. If you feel that you have not been offered a satisfactory resolution to your warranty issue, you may submit your request in writing for further consideration to the Warranty Department, Delta Consolidated Industries, Inc., P.O. Box 1846, Jonesboro, AR, 72403-1846. Explain in writing the nature of the problem and why you feel you have not been offered a satisfactory solution. Be sure to include the Model Number of the product and a copy of the sales receipt.

Note: This warranty applies solely to domestic sales and shipments made within the continental USA. It gives you specific legal rights in the USA, and you may have other rights imposed by one or more states in the USA.

## Delta PRO Brand Crossover, Innerside, Chest, Topside, Underbed and Trailer Tongue Storage Products Three-Year Warranty Statement

This Warranty is made by DCI to the original purchaser of Delta PRO Brand Aluminum and Steel Crossover, Innerside, Chest, Topside, Underbed Truck and Trailer Tongue Boxes and it is valid for three (3) years from date of the purchase upon presentation of a copy of the original sales receipt at the time of the warranty claim.

If the un-damaged Posi-Lift™ II gas springs fail to open an unrestricted lid during the period of the warranty coverage stated above, DCI will provide replacement gas springs at no-charge. Installation of replacement gas springs is not included.

## Delta CHAMPION Brand Truck Box One-Year Limited Warranty

This warranty is made by DCI to the original purchaser of Delta CHAMPION Brand Truck Boxes made by DCI and is valid for one (1) year from date of purchase upon presentation of a copy of the original sales receipt at the time of the warranty claim.

## Delta Brand Aluminum, Steel and Poly Crossover, Innerside, Chest, Liquid Transfer Tank, Trailer Tongue and Wheel Well Storage Products One-Year Limited Warranty\*

\* Excludes Structural Foam Model 203000 and 204000 Crossovers which have a special warranty which apply to only these models.

This warranty is made by Delta Consolidated Industries, Inc. (DCI) to the original purchaser of Delta Brand Aluminum, Steel and Poly Crossover, Innerside, Chest, Liquid Transfer Tank, Trailer Tongue and Wheel Well Boxes made by DCI and is valid for one (1) year from date of purchase upon presentation of a copy of the original sales receipt at the time of the warranty claim.

## Delta Brand Model 203000 and 204000 Structural Foam Crossover Warranty Statements

One-Year Limited Warranty — This warranty is made by DCI to the original purchaser of Delta Brand Structural Foam Model 203000 and 204000 Crossovers from DCI and is valid for one (1) year from date of purchase upon presentation of a copy of the original sales receipt at the time of the warranty claim.

Lifetime Limited Warranty On Structural Foam Construction — If the Structural Foam Crossover body or lid fail due to defect in material and workmanship during the usable life of the product, DCI will at its option repair or replace it at no-charge.

## JOBSITE Brand Steel Storage Products One-Year Limited Warranty \*

This warranty is made by DCI to the original purchaser of JOBSITE Brand Steel Storage Boxes made by DCI and is valid for one (1) year from date of purchase upon presentation of a copy of the original sales receipt at the time of the warranty claim.



**DELTA PRO**



**DELTA CHAMPION**  
FLANGROCK



**DELTA**



**DELTA** Liquid Transfer Tanks



**JOBSITE**  
by DELTA

**JOBSITE**  
by DELTA



**KARGO MASTER**

Delta Consolidated Industries  
4800 Krueger Dr.  
Jonesboro, AR 72403-6176

ph. 1-800-643-0084  
fax 1-877-365-1879

[www.deltastorage.com](http://www.deltastorage.com)

© 2012 Apex Tool Group, LLC.

For ordering, use part #T550836

\*Contact Customer Service for information on Delta's Keyed Alike Product.

All information in this catalog is subject to change without notice.